

**29A Eldorado Crescent, Meadow Heights, Vic 3048** **Raine&Horne.**

**House For Sale**

Friday, 23 February 2024

29A Eldorado Crescent, Meadow Heights, Vic 3048

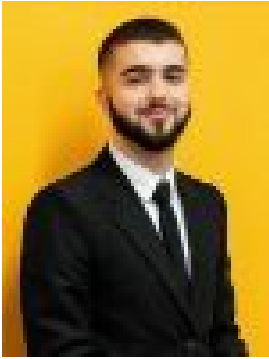
**Bedrooms: 2**

**Bathrooms: 1**

**Parkings: 1**

**Area: 314 m2**

**Type: House**



Fahd Yousef  
0413966009



Evan Ewaz  
0491308866

**PRICE GUIDE : \$ 390,000 - \$429,000**

Discover the convenience of urban living in this inviting 2-bedroom charming villa unit which is a display of stylish urban living, located brilliantly within walking distance to all local amenities. As you step inside, you will be immediately captivated by the modern and elegant design. The spacious living area is bathed in natural light, creating a warm and inviting atmosphere. The open floor plan seamlessly connects the living, dining, and kitchen areas, making it ideal for spending quality time with your loved ones while also having the comfort of a spacious study room separate to your living zone .. Highlights Include: • 2 Bedrooms • Study Room • Formal Lounge • Central Kitchen • Remote Lock up Garage with Internal Access • Downlights • Split System Cooling • Spacious Backyard • Land Size: 314m<sup>2</sup> Approx Distance to Amenities: - Bethal Medical Centre: 100 m - Bethal Primary School: 100 m - Bethal Primary School Kindergarten: 250 m - Barry Road Bus Stop : 400 m - Bellbrae Childcare and Kindergarten : 400 m - Coolaroo Train Station : 1.2 km This unit seamlessly blends tranquillity with urban convenience, offering a peaceful escape within reach of essential amenities. Don't miss the opportunity to make this well-connected residence your home.