

**29A Nursery Road, Kanmantoo, SA 5252**



**Sold House**

Tuesday, 12 March 2024

29A Nursery Road, Kanmantoo, SA 5252

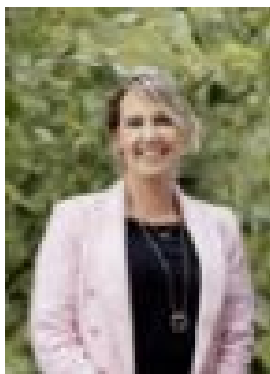
**Bedrooms: 3**

**Bathrooms: 2**

**Parkings: 2**

**Area: 1991 m2**

**Type: House**



Nicole Walker  
0413498021



Ryan Keatley  
0889316866

**\$618,500**

Welcome to this hidden gem nestled within a sprawling 1,991m<sup>2</sup> allotment, where tranquillity meets charm. As you step inside, you'll be embraced by the warmth and character of this private oasis. The main lounge room welcomes you with raked ceilings adorned with feature timber beams, creating a sense of space and ambience. A slow-combustion heater ensures comfort on chilly evenings, while two sets of double doors seamlessly connect the family and dining room to the outdoor entertaining area, promoting effortless indoor-outdoor flow. The internal features of this home are designed with both style and functionality in mind. A modern wall-mounted stainless steel oven, complemented by a large gas cooktop and stainless steel rangehood, perfect for culinary endeavours make this kitchen functional. All bedrooms are fitted with built-in robes, offering ample storage space, while linen storage adds convenience to daily living. Step outside and discover the impressive external features designed for entertainment and practicality. A spacious outdoor entertaining area awaits, complete with a heater, ceiling fan, and a fully equipped kitchen boasting a sink, pantry and plenty of bench space. Roller blinds provide privacy and shelter, allowing year-round enjoyment of outdoor gatherings. Additionally, a substantial garage with an auto panel lift roller door, coupled with an adjoining workshop, offers ample space for vehicles and hobbies. The property also features a sizable shed with adjoining storage, a chook shed, two rainwater tanks, and a woodshed, catering to various needs and interests. With its blend of internal elegance and external allure, this property offers a lifestyle of comfort and convenience for discerning homeowners, all within a private oasis filled with established gardens and trees. Kanmantoo offers the peace and tranquillity of rural living and is only a 20-minute drive to Mount Barker and a 20-minute drive to Murray Bridge you are centrally located between the two giving you the best of rural living while being close to major hubs. All information provided has been obtained from sources we believe to be accurate; however, we cannot guarantee the information is accurate, and we accept no liability for any errors or omissions (including but not limited to a property's land size, floor plans and size, building age and condition). Interested parties should make their own inquiries and obtain their own legal advice.