

2A Cedar Place, Ermington, NSW 2115

House For Sale

Thursday, 7 December 2023

2A Cedar Place, Ermington, NSW 2115

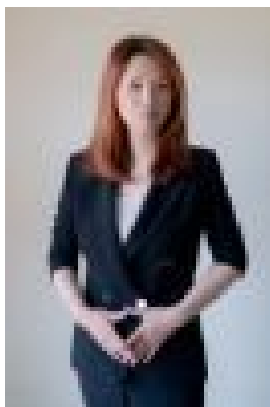
Bedrooms: 5

Bathrooms: 4

Parkings: 5

Area: 647 m2

Type: House



May Zhang

OVERSIZED HOME FACING THE PARK

This brand new architectural duplex is located in a beautiful quiet cul-de-sac back to the park. A magnificent large semi freestanding home, crafted to maximise its land area of 647m² boasts an impressive 348m² internally, this designer residence is filled with an abundance of natural light, soaring ceilings and a clever floor plan that gives you the feeling of grand spaciousness as you walk in while enjoying the privacy from rear park. To add to the convenience for an extended family, located on the ground floor is an additional 5th bedroom with its own ensuite, which could also be utilised as a home office/study. Furthermore 3rd living room is available separately at the front or as a theatre room. Featuring :-

- Concrete suspended slab on first floor-
- Luxuriously appointed kitchen with architectural curved island bench, engineered marble benchtops, BOSCH appliances, integrated microwave and dishwasher and most importantly a double integrated fridge making entertaining a delight-
- Walk in Butlers Pantry with high end engineered marble benchtops and LED striplighting-
- Commercial grade aluminium door frame and windows throughout-
- Four bedrooms upstairs with two rooms having internal ensuites, plus a fifth bedroom downstairs-
- Floor to ceiling tiles throughout the whole bathroom with luxurious LED vanity mirrors-
- Black designer tapware throughout with frameless shower screens-
- Dark mirror built in robes throughout all rooms, with high end joinery-
- All spaciouly sized bedrooms, especially with super-size master bedroom-
- Smart Entry Digital front door lock giving the convenience of entry via pin code, mobile phone, swipe card or fingerprint scan-
- Full Ducted Daikin Air conditioning throughout with dual zones-
- Video intercom and alarm-
- Lock up internal garage with remote control doors-
- Additional two study tables upstairs with high end joinery-
- Ample storage space downstairs and upstairs with high end joinery-
- Extensive landscaping and undercover outdoor alfresco entertaining area-
- Long driveway that gives an extra 3 additional car spaces on top of the double lock up garage, total 5 cars