

2a Hampden Lane, Kurri Kurri, NSW 2327

STONE

House For Sale

Thursday, 18 April 2024

2a Hampden Lane, Kurri Kurri, NSW 2327

Bedrooms: 3

Bathrooms: 1

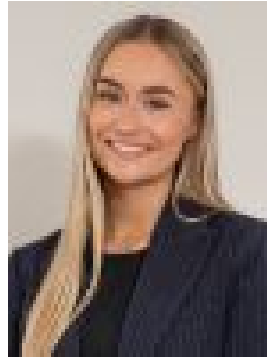
Parkings: 2

Area: 449 m2

Type: House



Renee Bean- Wyper
0240891122



Jorja Pauling
0240891122

\$585,000 - \$615,000

Catering to the needs of downsizers, new buyers and investors, this quality standalone home combines all the elements essential to comfortable modern living; a single-level design, generous dimensions and a lovely lawned yard - all putting functionality top of mind. Claiming a well-connected laneway position, it's hard to believe Kurri Kurri CBD is just 600m from the door.- Please note this a house and not part of a strata community- Brick and tile construction with an attached single garage and carport - Gorgeous yard framed by hedging, plenty of greenery and a level lawn - Spacious open-style living area featuring split-system air-conditioning - Modern kitchen flaunting stone surfaces and a stainless steel oven - Three bedrooms - all include a ceiling fan, master with built-in wardrobe - Spotless bathroom with a separate bath and shower, internal laundry- Hard to find location, placed on a quiet and easily accessed laneway - Three short blocks to retail stores, eateries, pubs and supermarkets