

**2a Pickworth Drive, Mill Park, Vic 3082**



**Unit For Sale**

Thursday, 5 October 2023

2a Pickworth Drive, Mill Park, Vic 3082

**Bedrooms: 2**

**Bathrooms: 1**

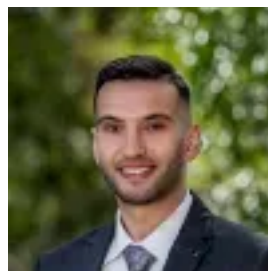
**Parkings: 4**

**Area: 306 m2**

**Type: Unit**



Kon Kouvas  
0394044999



Robert Stambo  
0394044999

**\$465k - \$495k - Auction Sat 27th April @ 12pm**

This lovely & well presented home is located in the heart of Mill Park. Situated just a stone's throw away from excellent local amenities, including St. Francis of Assisi Primary School, Heights Primary School and Mill Park Secondary College, bustling shopping centers like Westfield Plenty Valley, Stables Shopping Centre, Uni Hill and convenient public transport options, this property offers the ultimate in comfort and accessibility. With its tasteful redesign and high-quality finishes, this residence is an ideal choice for those seeking a comfortable and convenient lifestyle. Comprising two (2) generously sized bedrooms complete with built-in wardrobes, heating, and evaporative cooling, ensuring year-round comfort. The modern bathroom adds a touch of elegance, while the inviting living and dining area provides a cozy space for relaxation. The recently revamped kitchen boasts ample storage and a delightful modern-country aesthetic. Additionally, this property includes a garage, offering peace of mind for residents with vehicles, and features an extended driveway that can accommodate up to 4 cars. Currently leased till December 2024 at \$410pw. PHOTO ID REQUIRED Our new open for inspection regulations now require you to provide us with photo ID before you can enter the property. If you would like to view our privacy policy, please refer to the link below: Privacy Policy and Privacy Collection Notice - <https://www.raywhite.com/franchisee-privacy-policy/>