

**2A The Spur, Frankston South, Vic 3199**



**House For Sale**

Friday, 17 May 2024

2A The Spur, Frankston South, Vic 3199

**Bedrooms: 5**

**Bathrooms: 3**

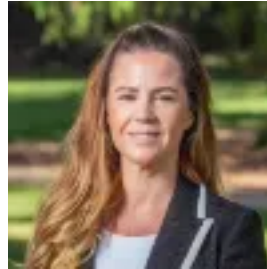
**Parkings: 2**

**Area: 551 m2**

**Type: House**



Ashley Weston  
0397812111



Kristell Elson  
0397812111

**\$1,375,000 - \$1,500,000**

Presenting an alluring lifestyle of exclusivity and coastal elegance, this renovated beachside home effortlessly blends timeless charm with contemporary sophistication. Nestled amidst a picturesque back-drop of lush greenery, a lofty elevation and modern facade forms a bold street presence to this five-bedroom FHSZ home. Delighted by a north-facing light, the dual-storey design delivers families a firm entertaining footprint where everyday living holds focus across a first-floor domain. Alluring with white-washed timber beams and a clean neutral palette, the light-filled level anchors accommodation with an open plan lounge and dining space, and kitchen complete with servery window, stone benchtops and premium-grade appliances. Making use of its elevation sees a private treetop alfresco extend entertaining outwards, while an intimate space for the children remains to the rear with direct Frankston Jamboree Park access. A dreamy master bedroom provides luxury for parents, with a dressing room and stylish ensuite, custom sheers and north-facing orientation. Servicing both family and guests, a main bathroom with stone-topped vanity sits central to three additional bedrooms across the top floor. The glimmer of a gas fireplace warms the downstairs level, where a generous lounge with wet bar, updated main bathroom and fifth bedroom with private alfresco access inspires a guest/teenager retreat, or the potential for short-stay accommodation (SCTA). With reverse-cycle ducted heating and cooling, solid timber floors, custom window furnishings, alarm system, a single garage and architecturally-designed gardens by Colin Hyett Design, this contemporary home sits only moments from Frankston Foreshore and Boat Ramp, Frankston High and Overport Primary School, and Bayside Shopping Centre. Should you require any further information, please do not hesitate to contact Ashley Weston on 0439 101 677 or Kristell Elson on 0400 165 801 anytime. Please note Photo ID is required for all inspections. All information about the property has been provided to Ray White by third parties. Ray White has not verified the information and does not warrant its accuracy or completeness. Parties should make and rely on their own enquiries in relation to the property.