

2F/16 Bligh Place, Randwick, NSW 2031



Sold Apartment

Friday, 22 September 2023

2F/16 Bligh Place, Randwick, NSW 2031

Bedrooms: 1

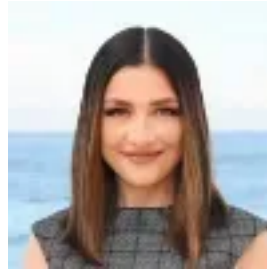
Bathrooms: 1

Parkings: 1

Type: Apartment



Eden Elmowy
0283476000



Amy Vella
0283476000

Contact agent

Set within the prestigious 'Riviera' building and tucked away in a leafy cul-de-sac setting between Centennial Park and Clovelly Beach, this spacious one bedroom apartment is perfect for both a first home owner or investor. Conveniently located only footsteps to Frenchman's Road cafes and shops and with easy access to Sydney CBD. • Bright lounge/dining area with floor-to-ceiling windows flows to a north east facing Juliette balcony • Designer kitchen with stainless steel cooking appliances • Generous bedroom with a mirrored built in wardrobe • Modern en-suite bathroom with separate bath and shower, updated vanity and internal laundry • One car space with visitor parking available • Secure building with intercom, lift access and swimming pool

Eden Elmowy 0450 605 923 e.elmowy@rwre.com.au
Amy Vella 0420 573 996 amy.vella@rwre.com.au
Phillip Elmowy 0425 285 444 p.elmowy@rwre.com.au