

**3/1 Smeaton Avenue, Hoppers Crossing, Vic 3029**



**Sold Unit**

Wednesday, 20 September 2023

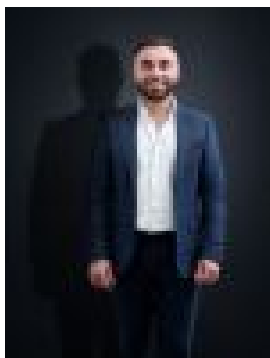
3/1 Smeaton Avenue, Hoppers Crossing, Vic 3029

**Bedrooms: 2**

**Bathrooms: 1**

**Parkings: 1**

**Type: Unit**



Abdul Merabi  
0424263506



James Antonio  
0401889248

**\$340,000**

Nestled in the heart of Hoppers Crossing, within the Mossfiel Estate, this generously proportioned unit is centrally positioned amidst a wealth of amenities, presenting an ideal opportunity for investors or owner-occupiers alike. With a sturdy foundation and awaiting your personal touch, this spacious 2-bedroom unit boasts a generously sized living area that seamlessly flows into an open kitchen and dining space. Cherished by the same family for over three decades, this beloved home now awaits its next chapter. Noteworthy features encompass a reverse cycle split-system for heating and cooling, a dedicated laundry area, a convenient carport, and a discreet rear location that ensures both privacy and security. This prime location places you mere moments away from Hoppers Crossing Railway Station, Victoria University, Werribee Mercy Hospital, Pacific Werribee Shops, as well as a delightful array of cafes and restaurants, providing you with the enticing option to leave your car behind. (PHOTO ID REQUIRED AT OPEN FOR INSPECTION) At YPA Estate Agents, our service will move you!