

3/1 Stevens Street, Croydon Park, SA 5008



Unit For Sale

Wednesday, 17 January 2024

3/1 Stevens Street, Croydon Park, SA 5008

Bedrooms: 2

Bathrooms: 1

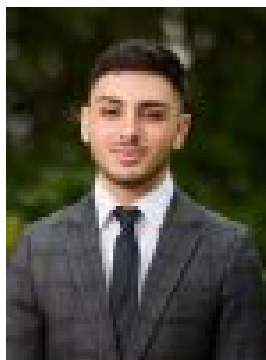
Parkings: 1

Area: 150 m2

Type: Unit



Nick Borrelli
0861871302



Cristian Aloisi
0431465222

\$300,000 - \$330,000

Discover the allure of old-world charm at 3/1 Stevens Street, Croydon Park - a delightful 2-bedroom, 1-bathroom unit boasting a unique character and timeless appeal. Nestled in a quiet neighborhood, this residence offers a cozy haven. The heart of the home is an open plan kitchen, meals, and living area. Whether you're cooking up a storm, sharing meals with loved ones, or unwinding after a long day, this versatile space is designed for comfort and convenience. The master bedroom is a retreat in itself - generously proportioned and adorned with a built-in robe. Enjoy the luxury of ample space while maintaining the cozy ambiance that makes this unit feel like home. Experience the joy of outdoor living with both a sunny back courtyard and a front courtyard. Bask in the natural light, cultivate a small garden, or simply savor a cup of coffee in your private oasis. A garden shed in the front courtyard adds practicality to your outdoor space. With a single carport, parking is a breeze. Protect your vehicle from the elements and enjoy the ease of coming home to your dedicated parking space. Neighbouring such high demand inner west suburbs like Croydon and Brompton, this neat and tidy 2 bedroom unit offers great access to public transport, local eats, and the Adelaide CBD less than 15 minutes away. Currently leased on a periodic basis to a long term tenant at \$285 per week. Disclaimer: As much as we aimed to have all details represented within this advertisement be true and correct, it is the buyer/ purchaser's responsibility to complete the correct due diligence while viewing and purchasing the property throughout the active campaign. Property Details: Council | PORT ADELAIDE ENFIELD Zone | GN - General Neighbourhood \\ House | 150sqm (Approx.) Built | 1971 Council Rates | \$1029 pa Water | \$153.70 pq Strata | \$408 pq