

3/14-16 Mcghee Avenue, Mitcham, Vic 3132



Unit For Sale

Friday, 5 April 2024

3/14-16 Mcghee Avenue, Mitcham, Vic 3132

Bedrooms: 2

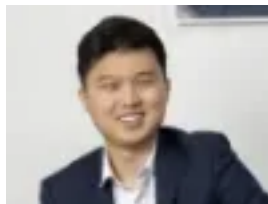
Bathrooms: 1

Parkings: 1

Type: Unit



Michael Steenhuis
0398743355



Jay Ow
0398743355

\$680,000 - \$720,000

Put carefree and convenient living at the centre of your world with this light and bright two-bedroom unit. Located within footsteps of Simpson Park and a network of walking tracks means early morning walks (or jogs) will form part of your daily routine, while living within walking distance of Mitcham's shopping and dining precinct, Mitcham train station, buses and Rangeview Preschool and just minutes from schools, the Eastern Freeway/EastLink, the Rangeview shopping strip and Eastland Shopping Centre delivers a superior level of everyday convenience. The positive appeal also extends to this fabulous residence, which is ideal for first-time buyers and empty nesters and enjoys the advantages of a fantastic single-level floorplan flaunting a large open-plan living area, spacious kitchen with gas cooking and a bright central bathroom servicing the privately zoned bedrooms – one of which opens onto a private decked courtyard! A tranquil rear courtyard boasts a favourable low-maintenance aspect; split-system heating/cooling, ducted heating, separate laundry and a single lock-up garage with an additional car space in front are further highlights. Whether your desire is to move straight in and call it "home" or lease it out for an attractive return, this is one opportunity you don't want to miss!