

3/14 Laird Street, Croydon, Vic 3136



Sold Unit

Saturday, 19 August 2023

3/14 Laird Street, Croydon, Vic 3136

Bedrooms: 2

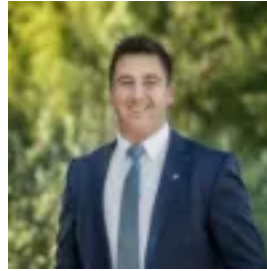
Bathrooms: 2

Parkings: 1

Type: Unit



Ash Thompson
0398706211



Alan Hodges
0398706211

\$720,000

Privately positioned towards the rear of the block amidst landscaped communal grounds, this impeccably presented single level brick home promises an effortlessly low maintenance lifestyle in secure surrounds. Situated within easy walking distance of Mooroolbark Station, Mooroolbark shopping and restaurants, Brushy Creek Trail and buses, the home is also within easy reach of Esther Park, Yarra Hills Secondary College, Ruskin Park Primary School, Billanook College and Croydon Civic Square shopping. Boasting elegant wide timber veneer flooring and quality contemporary finishes throughout, the home features a generous and light-filled open plan living and dining area. Adjacent, flowing out through glass sliding doors, an impressive alfresco entertaining area with heating panel offers ample space for effortless outdoor entertaining. A manicured lawn is framed by low maintenance garden borders, ideally laid out for family play or pets. A stylish kitchen includes stone benchtops, an island with breakfast bar, and stainless steel appliances with a dishwasher and gas cooktop. Each carpeted bedroom features mirrored built-in wardrobes, ceiling fans and split system air conditioning, with the master also offering chic pendant lighting and a bright stone ensuite. The home also includes a central bathroom with stone vanity. Featuring gas ducted heating, split system air conditioning, roller blinds with privacy sheers, and a security screen front door, the home also includes a single remote lock-up garage with both internal and backyard access. With smart home wiring, all internal lighting can be controlled via phone or remote, while all outdoor alfresco lighting is wifi controlled with dimmable and colour changing technology to create the perfect outdoor atmosphere. Situated within easy walking distance of Mooroolbark Station, Mooroolbark shopping and restaurants, Brushy Creek Trail and buses, the home is also within easy reach of Esther Park, Yarra Hills Secondary, Ruskin Park Primary and Croydon Civic Square shopping.