

**3/141 Sherbourne Road, Montmorency, Vic 3094**



**Sold House**

Friday, 3 November 2023

3/141 Sherbourne Road, Montmorency, Vic 3094

**Bedrooms: 3**

**Bathrooms: 2**

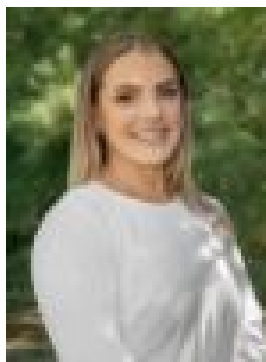
**Parkings: 1**

**Area: 597 m2**

**Type: House**



Scott Nugent  
0438054993



Hayley White  
0423523926

**\$1,007,000**

AUCTION THIS THURSDAY 9TH NOVEMBER @ 6:30PMSOLD by Jellis Craig. Set well back and hidden from the road in a private court, this stylish home enjoys elevated treetop views and the soft chorus of birdsong. Showcasing the best of contemporary living, the open plan lounge and dining room are flooded in natural light, enhanced by Baltic pine floors and seamless access to a covered deck. A culinary haven, the gourmet kitchen allows the head chef to interact with guests while preparing a meal or keep a watchful eye on children doing homework, featuring a stone breakfast bar, quality European appliances and wonderful storage space. Tucked off a central hallway, discover three bright and airy bedrooms with built-in robes, serviced by a sparkling bathroom with a separate toilet. Head downstairs to find a large flexible space that could be used as a rumpus room, home office or a master suite, featuring clever built-in storage, a modern ensuite and a separate entrance. Deceptively spacious, the north-facing backyard boasts an open-air deck with custom bench seating, mature trees and endless room for relaxing, entertaining or family activities. Notable highlights include ducted heating, split system air conditioning, a water tank, large under-house storage area/workshop, a cubbyhouse and off-street parking. In the ideal family location, it's only a matter of minutes to reach Were Street shops and cafes, Greensborough Plaza, bus and train services, Eltham Village, and within the catchment zone for Sherbourne Primary School and Montmorency College.