

**3/16 Waranga Crescent, Broadmeadows, Vic 3047**



**Sold Townhouse**

Thursday, 11 January 2024

3/16 Waranga Crescent, Broadmeadows, Vic 3047

**Bedrooms: 2**

**Bathrooms: 1**

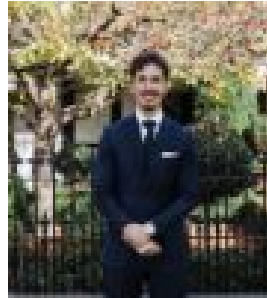
**Parkings: 1**

**Area: 140 m2**

**Type: Townhouse**



Omer Koksal  
0423230777



Jack Murray  
0421522898

**\$450,000**

Enjoying the quiet and peace of the rear position in this small complex of 3 units stands a 2 bedroom townhouse with quality fixtures and split system comfort. Boasting a great and practical floorplan, big bedrooms, a chef's kitchen at its heart with stone benchtops and space galore, living and dining areas to provide individual space for everyone and easy clean floors and a functional backyard space for glorious sunny days. Only moments from schools, reserves and Merlynston Creek walking tracks, public transport and everyday amenities, enjoy the character and functionality this home will bring you or the returns it will bring through your tenants. Highlights;- Approximately 140sqm property- Great first home buy or rental returns for any astute investor- Open plan living area with tiles throughout and an 8KW split system unit + study nook- Spacious chef's kitchen featuring 40mm stone benchtops, s/s dishwasher, 600mm gas cooktop and oven, ample storage space and eat in counter with adjoining dining space- Two big bedrooms with floorboards, double mirrored BIRs and 2.5KW split system units- Central bathroom with half tub and XL vanity + powder room downstairs- Big internal laundry- Double lock up carport attached to the rear yards + WT & shed- Nearby to Seabrook Reserve, sports clubs and Jack Roper Reserve- Short drive distance to Broadmeadows Station, public transports and fantastic local restaurants and bakeries- Convenient to Seabrook Reserves, sports fields and clubs- Moments from Broadmeadows Central, amenities and ample council facilities and 20mins from Northlands Shopping Centre- Within the school catchment zones for Broadmeadows Primary School and Hume Central Secondary College, and private schools Ilim College, Sirius College, Penola College and St Dominic's Primary- Direct access 19kms to Melbourne CBD via M2/Pascoe Vale Rd and 19kms to Tullamarine Airport All information about this property has been provided to Ray White by third parties. Ray White has not verified the information and does not warrant its accuracy or completeness. Parties should make and rely on their own enquiries in relation to this property.