

3/20 Alexandra Road, Glebe, NSW 2037



Studio For Rent

Tuesday, 30 April 2024

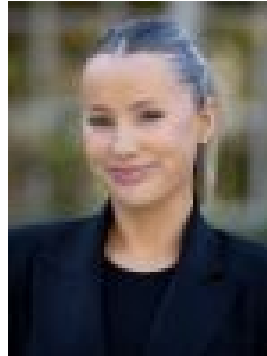
3/20 Alexandra Road, Glebe, NSW 2037

Bathrooms: 1

Type: Studio



Courtenay Kitanovski
0431815969



Heidi Gouverneur
0293573434

\$450 per week

Quick Facts: Open for inspection: By appointment or scheduled open home Available: 13/05/2024 Applications: Via 2Apply Lease term: 12 months preferred Sunny studio apartment in a quiet leafy location on waterfront Bicentennial Park. Features: - Spacious living space - Renovated Bathroom - Full sized kitchen - Shared laundry Set in a prime location next to Jubilee Park, moments from Rozelle Bay, a stroll from many lifestyle attractions such as the Tramshed, harbour side parklands, the light rail and buses ** All information contained herein is gathered from sources we consider to be reliable, however, we cannot guarantee or give any warranty to the information provided. ** Photography and illustrations are for presentation purposes only and should be regarded as indicative representations only.