

3/21 Harriett Street, Adelaide, SA 5000



Townhouse For Sale

Friday, 14 June 2024

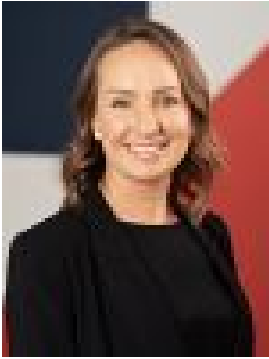
3/21 Harriett Street, Adelaide, SA 5000

Bedrooms: 3

Bathrooms: 2

Parkings: 1

Type: Townhouse



Rachael Pavli
0882674995

\$870,000 - \$920,000

Offers By | Monday 1st July 10am (Unless sold prior) Through a secure gated entry find this modern 2 storey townhouse nestled at the rear of a small group of three with a picturesque courtyard plus 2nd storey balcony. Positioned in the much sought after Southeast corner of Adelaide City, this superb property has large open plan living, high ceilings, stunning new oak look flooring, fresh paint, plenty of cupboards and valuable secure enclosed car park, a rare find in this coveted location. Upon entry the ground floor accommodates two large bedrooms, the indulgent master includes a generously sized walk-in robe and ensuite bathroom, the second bedroom is generous in size and has ample storage. The true highlight of this level are the French doors leading to a picturesque private courtyard. Another bathroom services this level and there is internal access from the garage. Up the staircase find a spacious open-plan living area with an abundance of windows and an elegant atmosphere. A large study has double doors and could easily be converted to a third bedroom if you desired. The well-equipped kitchen features stainless steel appliances, a dishwasher and large corner pantry. A glass door effortlessly connects the indoors with the outdoors on the balcony, making it perfect for both living and entertaining. This level is complete with a convenient laundry and guest toilet. For ultimate privacy this townhouse is nestled to the rear behind automatic gates with intercom and is complete with ducted reverse cycle air conditioning. Notable features: Small pet allowed, up to 15kg Ducted reverse-cycle air-conditioning Secure gated entrance with intercom Single garage with automatic roller door Private courtyard Balcony Fresh paint New oak look floorboards High ceilings* Please note: The window coverings in the photographs have been removed. The fridge, washing machine and microwave are included. This tightly held enclave boasts a short and enjoyable walk to cosmopolitan Hutt Street, the vibrant East-End precinct and of course Victoria Park and the tranquil Adelaide-Himeji Garden. Surrounded by a range of trendy cafes, award-winning restaurants and the free city loop bus, there is an enviable lifestyle on offer. Zoned for both of Adelaide's sought after public high school, Gilles St Primary and an array of elite private schools with the free connector bus and other public transport close by.* Zoning information is obtained from www.education.sa.gov.au Purchasers are responsible for ensuring by independent verification its accuracy, currency, or completeness. Council Rates | \$TBA pa SA Water | \$TBA pq ESL | \$TBA pa Year Built | TBA Are you thinking of purchasing this property as an investment? Speak with our Property Management team on how we can assist you. All information provided (including but not limited to the property's land size, floor plan and floor size, building age and general property description) has been obtained from sources deemed reliable, however, we cannot guarantee the information is accurate and we accept no liability for any errors or oversights. Interested parties should make their own enquiries and obtain their own legal advice. Should this property be scheduled for auction, the Vendor's Statement can be inspected at our office for 3 consecutive business days prior to the auction and at the auction for 30 minutes before it starts.