

**3/248 Lawrence Road, Mount Waverley, Vic 3149**



**Unit For Sale**

Friday, 3 November 2023

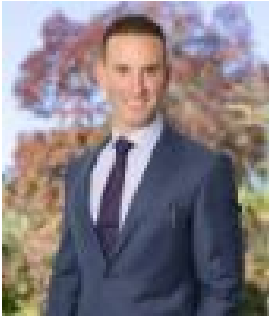
3/248 Lawrence Road, Mount Waverley, Vic 3149

**Bedrooms: 2**

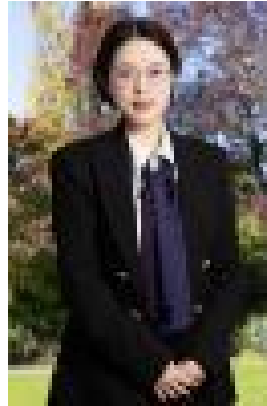
**Bathrooms: 1**

**Parkings: 2**

**Type: Unit**



Adrian Goegan



Amanda Chen  
0450329339

## **AUCTION - \$900,000 - \$990,000**

Exciting opportunity to secure this immaculately presented unit with its own street frontage, showcasing style and elegance, nestled in the coveted Mount Waverley Secondary catchment (STSA). Featuring an extensive open plan living and dining area. This zone flows through to a superbly renovated modern kitchen enjoying a sunny outlook, enhanced by new stainless-steel appliances including a gas cooktop, sleek bench tops and a subway tiled splashback. The two spacious, robed bedrooms are zoned and share a fully renovated, dual access bathroom, complete with a stunning, freestanding bathtub and floor to ceiling tiles, plus a separate toilet. Venture outside and enjoy relaxing and entertaining under the generous pergola incorporating a private courtyard, garden paths and sumptuous, low maintenance garden surrounds. Extras features include ducted heating, split system heating & cooling, freshly painted throughout, a sizeable, renovated laundry, dual roller blinds throughout and a double garage with rear access. Centrally located in a premier location with public transport at your doorstep and a short stroll to 2 train stations, Huntingtower School, Syndal South Primary, Valley Reserve and walking tracks with easy access to Mount Waverley Village, The Glen Shopping Centre, Wesley College, Monash and Eastlink Freeways.