

3/25 Lloyd Street, Belmont, Vic 3216



Townhouse For Sale

Wednesday, 17 April 2024

3/25 Lloyd Street, Belmont, Vic 3216

Bedrooms: 3

Bathrooms: 2

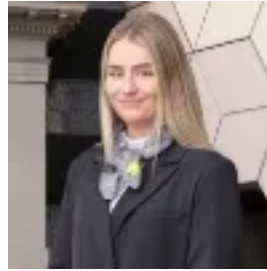
Parkings: 2

Area: 176 m2

Type: Townhouse



George Politis
0352411331



Mollie Chandler
0475843029

\$849,000 - \$899,000

Nestled in a highly sought-after pocket of Belmont, within walking distance of High St shops, schools, parks and a quick commute to town, this meticulously designed property offers an unparalleled blend of luxury, convenience and thoughtful architecture. Step into a world of elegance with the large living and dining area, where genuine Blackbutt hardwood floors create a warm and inviting ambience. The designer kitchen features sleek 40mm stone benchtops, state-of-the-art stainless appliances, and an ergonomic layout that makes cooking a pleasure. Three spacious bedrooms, each with reverse-cycle split systems, block out blinds, and large built-in robes, serve as tranquil sanctuaries in this quiet neighbourhood. A separate, stylish laundry paired with 3 large linen presses as well as under-stair cupboards provides fantastic storage solutions, ensuring your home remains clutter-free. Both beautifully appointed bathrooms showcase floor-to-ceiling herringbone tiles, 40mm stone vanities, rainfall showerheads and heat lights, blending functionality with aesthetic appeal. Experience year-round comfort with an additional 2 reverse cycle split system heater/coolers in the downstairs and upstairs living spaces. High ceilings and square set cornice amplify the sense of space, contributing to the townhouse's airy and open feel. Security and convenience are paramount with the double garage, featuring a remote control door and direct internal access to your home. Highton Village and Waurm Ponds Shopping Centre, Epworth Hospital, Deakin University, the vibrant Geelong CBD, and picturesque Waterfront are only a short drive away, whilst public transport hubs surround the property. This location provides privacy, seclusion, and unmatched accessibility.