

3/32 Arundel Street, Fremantle, WA 6160

House For Sale

Saturday, 15 June 2024



3/32 Arundel Street, Fremantle, WA 6160

Bedrooms: 3

Bathrooms: 2

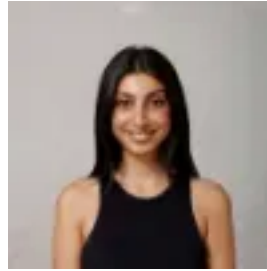
Parkings: 2

Area: 180 m2

Type: House



James Peach
0433464339



Ish Sikka
0401972434

Offers from \$795,000

Enviably nestled in between South Terrace and Marine Terrace - and behind the security of an automatic gate, this warm and inviting 3 bedroom 2 bathroom two-level apartment is a unique offering at the rear of the complex, with its gorgeous character-laden interior complemented by an ultra-convenient location just footsteps away from everything in the heart of Fremantle. High ceilings and solid wooden floorboards grace the downstairs level, inclusive of a welcoming open-plan living, dining and kitchen area. Here, three ceiling fans and a split-system air-conditioning unit complement sleek stone-transformation bench tops, tiled splashbacks, double sinks, a breakfast bar for quick bites, a microwave nook, a stainless-steel range hood, stainless-steel Whirlpool five-burner gas-cooktop and oven appliances, a white AEG dishwasher and a large walk-in pantry-come-laundry. Outdoor access to a large tiled alfresco-style entertaining balcony is rather seamless and reveals café blinds for full enclosure and protection from the elements, as well as splendid sunset glimpses and views of the surrounding pine trees. Also on the lower floor is a huge master bedroom with split-system air-conditioning, a ceiling fan, a large walk-in wardrobe, an under-stair storeroom and its own private balcony access. The adjacent fully-tiled bathroom plays host to a shower, a free-standing bathtub, a toilet and a powder vanity for washing up. Upstairs, both bedrooms are super-spacious in size and are graced by soaring cathedral-style high ceilings, their own ceiling fans, split-system air-conditioning units, handy roof/attic storage access and pleasant sunset and pine-tree vistas from within. They are also separated by a central and fully-tiled second bathroom with a shower, vanity and toilet. At ground level, a generous lock-up external storeroom benefits from secure pin-code access and is the perfect place to store all of your tools and toys away. It also sits just inches away from two exclusive side-by-side single car bays - a near-rarity for a locale such as this one.

Hop, skip or jump to an unlimited amount of attractions and activities, beginning with The Freo Doctor Liquor Store across the road and The Norfolk Hotel around the corner. The Fremantle Markets are only a block away, with a series of bus stops, medical facilities, shops, the town's iconic cappuccino strip, other trendy bars and restaurants, Fremantle Primary School, Christian Brothers College, the boat harbour, the sprawling Esplanade Park and even The University of Notre Dame all only walking distance away in their own right. Don't forget about just how close both Bathers Beach and South Beach are, as well as the buzzing South Fremantle strip - and even Fremantle Train Station. With all of this - and more - on your doorstep, you will absolutely love the quaint nostalgic atmosphere that "Freo" has to offer. Leave the cars locked up and put those walking shoes on, because this, ladies and gentlemen, is an enviable low-maintenance lock-up-and-leave lifestyle like no other! Other features include, but are not limited to:

- Remote-control and pin-code access to the driveway gate for peace of mind
- Optional keyless entry into the apartment
- New carpets to the staircase and upstairs bedrooms
- Feature ceiling cornices
- Feature skirting boards
- Plantation-style window shutters
- Instantaneous gas hot-water system
- Attractive street façade - with popular boutique-accommodation residences occupying the front of the complex
- Street-parking options for your guests and visitors to utilise when they pop over to say hello

Size: Residence: 116m² Porch/Stairs: 7m² Storage: 6m² Car Bays: 30m² Balcony: 21m² Total: 180m²