

**3/35 Allenby Avenue, Reservoir, Vic 3073**



**Unit For Rent**

Thursday, 13 June 2024

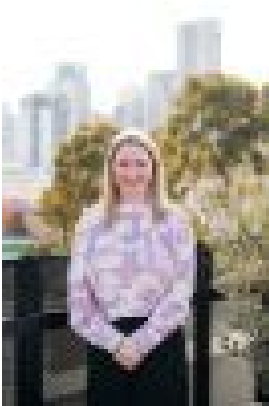
3/35 Allenby Avenue, Reservoir, Vic 3073

**Bedrooms: 2**

**Bathrooms: 1**

**Parkings: 1**

**Type: Unit**



Jessica Lander  
0475345664

**\$500 per week**

This spacious fully renovated rear two bedroom unit is a must! Features include:- Two bedrooms- Renovated kitchen with dishwasher - Single car garage- Open plan living/dining- Manicured secure rear courtyard- Heating/cooling- Freshly painted- Polished floorboards The home is in a fantastic location, close to Reservoir East Primary and Reservoir Views Primary School, and easy access to La Trobe University. In terms of public transport, the property is serviced by both Ruthven and Reservoir train stations and is close to the M80 Ring Road. Both local shops and the Summerhill Shopping Centre are nearby, and the area has plenty of parks and reserves close by, including Edwardes Lake Park and JC Donath Reserve.\*\* Please ensure you register for all inspections as only registered renter's will be notified of any changes to inspections.