

**3/35 Panorama Avenue, Lower Plenty, Vic 3093**



**Townhouse For Sale**

Monday, 8 January 2024

3/35 Panorama Avenue, Lower Plenty, Vic 3093

**Bedrooms: 3**

**Bathrooms: 2**

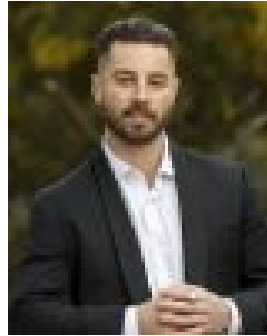
**Parkings: 1**

**Area: 144 m2**

**Type: Townhouse**



Peter Don  
0410609006



Sean Salmon  
0417011789

**\$780,000 - \$830,000**

Easy to live with proportions, brilliant indoor-outdoor living, thoughtful zoning, and a location that will delight...they all come seamlessly together in this quality town residence designed and constructed with a focus on entertaining, not maintaining. Tucked at the rear of a boutique block of only four, the free-flowing layout of the ground floor introduces a spacious lounge, partnering it with an equally generous family/meals overlooked by a stone-finished soft-close kitchen. Appointed with premium appliances, it is ready to cater to all events. Sliding doors extend the living to a stunning combination of decked and paved entertainment spaces, ready for year-round enjoyment. Intelligent zoning places the accommodation options on the first floor. The main bedroom with a walk-in robe and deluxe stone ensuite is complemented by two further bedrooms sharing a stone-detailed family bathroom. THINGS WE THINK YOU'LL LOVE:- The amazing outdoor area. With a heater, fan, remote blinds and a woodfire pizza oven, you'll be outdoors all summer!- A powder room on the ground floor means no need for guests to head upstairs - The primary school, bus and the eateries, cafes, and choice of supermarkets of Lower Plenty Village are all within an easy walk - The convenience of all-weather internal access from the remote garage means no more drenching's as you bring the groceries in - Ducted heating and cooling