

3 & 4/260 Cambridge Road, Kilsyth, Vic 3137



Unit For Sale

Sunday, 13 August 2023

3 & 4/260 Cambridge Road, Kilsyth, Vic 3137

Bedrooms: 4

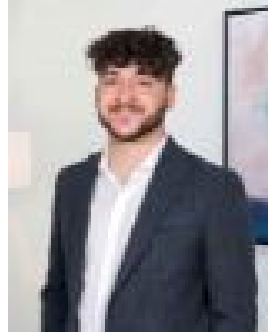
Bathrooms: 2

Parkings: 2

Type: Unit



Ben Hollow
0425407363



George Brown
0431458777

\$950,000 - \$1,045,000

Please note all inspections are held in-house at 38-40 McAdam Square, Croydon. Contact Agent for further information. Distinctly high-end, this boutique development comprising four residences, will set a new benchmark for luxury and liveability in ever-evolving Kilsyth. Showcasing modern design with advanced technological appointments, the off-the-plan homes will allow residents to enjoy fashion-forward living at its most luxurious. Set to feature 9ft ceilings, combined living and dining rooms, a second living area, stunning kitchens with SMEG appliances and stone benches, four carpeted bedrooms with built-in wardrobes, two sleek-tiled bathrooms with stone-top vanities and semi-frameless showers with niches, full-size laundries, undercover alfresco areas and lockup garages with internal access. Distinguishing them from standard developments, the energy-efficient homes will boast appealing exteriors with Colorbond pitched roofs, huge 10kW solar systems, LED lighting, ducted dual-zone ducted heating and cooling (Wi-Fi enabled) plus the provision for batteries and electric vehicle fast chargers. Premium low-e, double glazed windows feature throughout. Providing an enviable low maintenance lifestyle, the complex is located within walking distance to bus stops, parks and trails. Only a few minutes' commute to schools, Churinga Shopping Centre, Mooroolbark shops and train station, Montrose Village and the delights of the Mount Dandenong Ranges. Noel Jones Real Estate has taken every precaution to ensure the information contained herein is true and accurate, however accept no responsibility and disclaim all liability in respect to any errors, omissions, inaccuracies, or misstatements that may occur. Prospective purchasers should make their own enquiries to verify the information contained herein.