

3/40 Highclere Avenue, Mount Waverley, Vic 3149

buxton

Sold House

Saturday, 12 August 2023

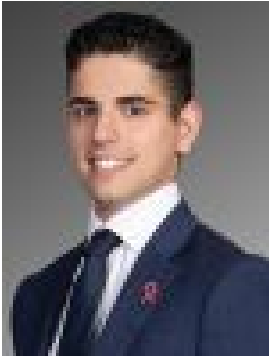
3/40 Highclere Avenue, Mount Waverley, Vic 3149

Bedrooms: 4

Bathrooms: 2

Parkings: 4

Type: House



Peter Serafino
0398096488



Tai Menahem
0468967900

\$1,161,000

Nestled within an exclusive enclave, this impeccably designed townhouse offers a serene and private lifestyle. Thoughtfully crafted to provide spacious living and designed to maximise northern light, the contemporary dual-zoned layout reveals a vast lounge/dining domain and casual living/meals area including a gourmet kitchen, both unfolding to a large covered entertaining area. Optimal space is further continued with 4 bedrooms (main with WIR, balcony and ensuite and another with balcony), immaculate bathroom and study nook. Affording a superior lifestyle of comfort, style and convenience complete with heating/AC, powder room and double garage. Situated in the sought-after Pinewood Primary and Mount Waverley Secondary College catchments, moments to Pinewood shops, Pinewood Primary School, parklands, buses and M1 Freeway. *Please Note* Buxton Real Estate may refuse to provide further information about the property should you prefer not to disclose your Full Contact Details including Phone Number. Photo id required upon entering the property.