

**3/60-64 Foch Street, Box Hill South, Vic 3128**



**Sold Unit**

Friday, 15 September 2023

3/60-64 Foch Street, Box Hill South, Vic 3128

**Bedrooms: 2**

**Bathrooms: 1**

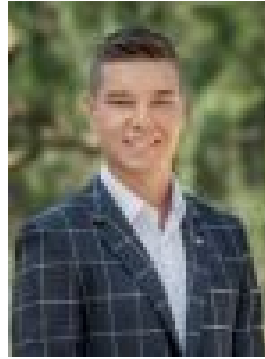
**Parkings: 1**

**Area: 127 m2**

**Type: Unit**



Samantha Pascoe  
0432455693



Nicholas Walker  
0457777075

**\$602,000**

Touch of Style with Breathtaking Golf Course Views! Nestled within a serene estate, this remarkable 2-bedroom unit offers a fabulous living option for discerning singles and couples alike. The generous master bedroom boasts built-in robes, providing ample space for all your storage needs. A thoughtfully designed bathroom/laundry combination is cleverly tucked away for convenience. The perfect blend of style, convenience, and natural beauty. Step inside to discover the sleek and inviting ambience of high cathedral ceilings, creating a sense of openness and grandeur. Bright and inviting, the meals and family area seamlessly connects to a centrally located kitchen, complete with Euro-style stainless-steel appliances. Step onto the timber deck and be swept away by the tranquillity that comes with unparalleled views overlooking the renowned Box Hill Golf Course. Whether you're enjoying your morning coffee or entertaining guests, this picturesque setting provides the perfect backdrop for relaxation and rejuvenation. Perfectly situated, this property offers more than just stunning aesthetics. Public transport options are within a stone's throw, ensuring easy access to the city and beyond. Renowned schools such as Roberts McCubbin Primary and Kingswood College are nearby. Deakin University is just a short drive away. The shopping meccas of Box Hill, Doncaster, and Chadstone are all conveniently located within easy reach. Features include a single car space, evaporative cooling, in-ground heating, and a handy tool shed for your storage needs. Direct rear gate access to the Gardiners Creek Trail opens up endless possibilities for relaxation and recreation. Additional visitor parking is available to accommodate guests with ease. Embrace the epitome of urban living with supreme views over the prestigious Box Hill Golf Course. And with express trains from Box Hill Station to Melbourne CBD, commuting to work or enjoying the city's vibrant offerings has never been easier.