

3/66 Kingsville Street, Kingsville, Vic 3012



Townhouse For Sale

Tuesday, 7 May 2024

3/66 Kingsville Street, Kingsville, Vic 3012

Bedrooms: 3

Bathrooms: 1

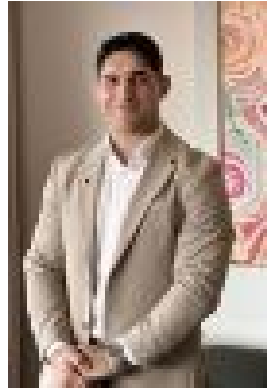
Parkings: 2

Area: 200 m2

Type: Townhouse



Joseph Luppino
0383987800



Max Marcialis
0422649411

\$780,000 - \$850,00

Tucked quietly away from the street for peace and privacy, this recently updated freestanding three-bedroom large townhouse will delight families seeking a spacious, low-maintenance retreat in a fabulous lifestyle location. Sun-drenched interiors boast generous proportions and timeless contemporary styling, with oversized living and dining zones offering a superb family hub and instant access to the inviting entertainer's garden. - freestanding double-story townhouse ideal for easy family living and entertaining - free-flowing kitchen/dining and living areas offering an oversized family hub ideal for relaxing and entertaining - master bedroom with walk-in robe + two additional bedrooms with built-in robes - centrally positioned bathroom with shower, bath, and separate toilet + guest powder room - walk-in laundry - fabulous entertainer's garden with deck, large paved patio, and a lush grassed area shaded by an established tree - comfort assured by ducted heating and evaporative cooling - quality floor treatments, including stunning hardwood floorboards - under-stair storage - secure single garage + driveway space for parking - no body corporate fees (only strata insurance applies) - surrounded by friendly neighbours in an ideal lifestyle location perfect for family living. Walk to The Western Brew for a superb morning coffee and enjoy the convenience of Somerville Road's cafes and eateries a six-minute walk from home. The easy walk to Yarraville Square promises enviable access to Coles and a variety of retailers, while a four-minute drive or easy bus ride will deliver you to Yarraville Village, where you'll enjoy a huge selection of bustling cafes and eateries, boutiques, grocers, and the iconic Sun Theatre. Proximity to Seddon Village and Footscray's buzzing dining precinct adds extra lifestyle appeal, while the kids will love the short stroll to the Beevers Reserve Playground and Cruickshank Park - walk to Kingsville Primary School and a choice of childcare providers and drive to Footscray High School in five minutes - only 9.2km from the CBD with easy road access, or catch the train from West Footscray Station or Yarraville Station, both within five minutes of home