

3 Adina Street, Rye, Vic 3941



Sold House

Sunday, 13 August 2023

3 Adina Street, Rye, Vic 3941

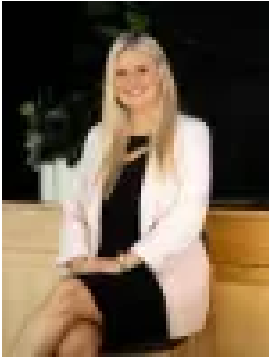
Bedrooms: 3

Bathrooms: 2

Parkings: 2

Area: 640 m2

Type: House



Jade Springer
0359852600

\$1,130,000

A truly magical property located in one of the most sought after and tightly held positions in Rye, 'OCEAN TIDE' boasts an impressive design and a long list of features that make it an exceptionally rare find. Situated in a peaceful, leafy street and enveloped by mature native vegetation, this beautiful coastal home offers spacious, light filled interiors and an open concept floor plan, plus a huge outdoor entertaining deck and fully landscaped rear garden – making this home a property for all seasons. Featuring three lovely bedrooms including a generous primary bedroom with ensuite, the home also features a large open plan living room, family room, family bathroom with spa, separate full laundry, and a lovely wrap around deck. Each room also has its own split system air conditioner whilst the rest of the home is kept warm by central gas ducted heating. In addition to the gorgeous interior, OCEAN TIDE also offers a tranquil outdoor entertaining space complete with a cosy fire pit and relaxing hammock. Located just a short stroll from local icon Peninsula Pantry and only a few minutes drive to town where you will find a great variety of cafes, restaurants and shopping, from this position – everything you want is either on your doorstep or not too far away! Contact Jade today to arrange your inspection. Property Features Include: Beautiful three bedroom, two bathroom, two living room home in a quiet location surrounded by mature coastal vegetation. Light bright interiors featuring downlights, stunning hardwood flooring and plush carpets throughout. Beautifully landscaped coastal gardens including a large entertaining deck, cosy fire pit, and relaxing hammock. Split system air conditioning & ducted heating to all rooms. Primary bathroom featuring luxurious spa bath. Premium location, walking distance to local icon Peninsula Panty as well as being within close proximity to Rye Ocean Beach, Rye Village, Pier, and Foreshore. *All distances and measurements are approximate only.