

3 Arya Road, Charlemont, Vic 3217



House For Sale

Wednesday, 14 February 2024

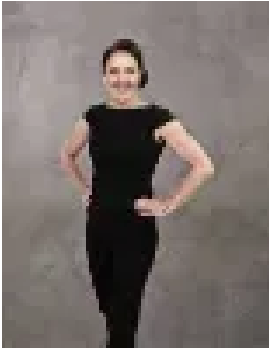
3 Arya Road, Charlemont, Vic 3217

Bedrooms: 4

Bathrooms: 2

Parkings: 2

Type: House



Michelle Winckle
0352411488



Sophie Spowart
0478957905

\$795,000 - \$845,000

Situated on a spacious 448 sqm allotment at the top of Charlemont rise, this stunning custom-built home must be seen to be believed. Unique from start to finish you'll be impressed by the attention to detail, quality construction and fantastic added extras that make this home stand out from the crowd. With 2700mm high ceilings, high internal doors, an intercom and alarm system, and 3 spacious living zones, this home has it all! Showcasing the best of family living, the home comprises of 4 large bedrooms, the master bedroom includes an expansive walk-in robe and luxurious ensuite with double vanity, marble tiles, and ample cupboard space. The other three bedrooms include built-in robes for added storage and are serviced by the centrally located bathroom complete with a gorgeous free standing bath, floor-to-ceiling marble tiles shower and vanity and large mirror. The heart of the home is the stunning designer kitchen, with 900mm oven with five burner gas cooktops, 900mm rangehood, dishwasher, 60mm stone bench and double bowl undermount sink. Overlooking the dining and entertaining area, with glass sliding doors leading out the beautifully designed low-maintenance garden. The home also includes a formal living space and rumpus for ample room for the whole family. Other features of the home include: • Ducted heating and evaporative cooling • Double garage with internal access • Stone bench tops in the laundry • Ample cupboard and storage places throughout the home Perfectly positioned within 10 minutes of both Waurm Ponds and Armstrong Creek Shopping Centre's and less than 15 min to either Torquay or Thirteenth Beach. Situated within walking distance to Iona College and the brand new cool kids childcare centre, you'll be in the heart of the area's best schools. This home is also only a 10-minute drive to Deakin University and Epworth Hospital, making it a perfect location for a growing family.*All information about the property has been provided to Hayeswinckle by third parties. Hayeswinckle has not verified the information and does not warrant its accuracy or completeness. Parties should make and rely on their own enquiries in relation to this property.