

3 Bauhinia Court, Rangeville, Qld 4350



Sold House

Sunday, 22 October 2023

3 Bauhinia Court, Rangeville, Qld 4350

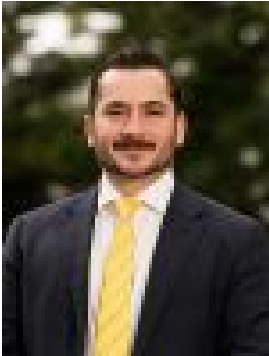
Bedrooms: 3

Bathrooms: 1

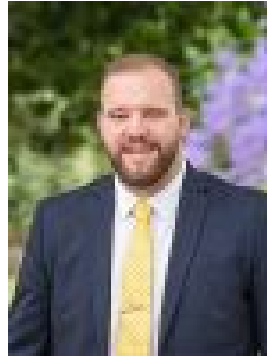
Parkings: 2

Area: 703 m2

Type: House



Angus Mathieson
0432264499



Ben Liesch
0400436802

\$565,000

Positioned in a peaceful east side cul-de-sac and with direct access to tranquil parkland, this Rangeville home offers fantastic value and near endless opportunity! A tried and tested formula of a low set brick home in Toowoomba's desirable suburb of Rangeville, this property offers some unique benefits to its future owner. With 26m of frontage to East Creek, the home benefits from picturesque vistas over the well maintained parkland and what feels like an endless expansion to the backyard. Solid in construction and updated through the home, step inside 3 Bauhinia Court to find polished timber flooring, separate living areas and an agreeable layout. The heart of the home is no doubt the updated and accomplished kitchen. Offering ample bench space and an attached dining area, it is fit for any home chef. With a north eastern aspect and good proportions, the separate living room is warmed through the winter months by gentle sun and offers a wonderful space to relax and live. Three generous bedrooms are complemented by an additional study with built in storage and desk. Each with security screens and the main with built in wardrobing. A well appointed bathroom is central to the bedrooms and vehicle storage is catered to by a double carport. Convenient additions come in the form of water storage and solar system. Established, low maintenance gardens yield both fruit and flower and are a perfect frame for this residence. Positioned within catchments and walking distance to both Rangeville State School and Centenary Heights State High School and nearby to private schooling options. The home has unparalleled access to Toowoomba's magnificent parks, meaning this home is convenient yet peaceful thanks to its cul-de-sac location. Be sure to inspect this tremendous home. Blending practicality, comfort, convenience and ongoing potential, this property will not last long!
Rates: Approximately \$1498.21 per half year
Water Access: Approximately \$314.59 per half year