

# 3 Eagle Close, Woodrising, NSW 2284

STONE

## Sold House

Thursday, 2 November 2023

3 Eagle Close, Woodrising, NSW 2284

Bedrooms: 4

Bathrooms: 3

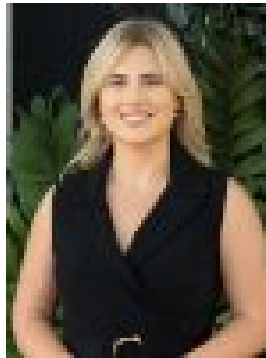
Parkings: 2

Area: 731 m2

Type: House



Alexandra Diktakis  
0414772285



Sarah OMalley  
0448582613

**\$777,000**

Nestled in a quiet cul-de-sac, a 10-minute walk from Lake Macquarie State Conservation Area and Awaba Bay foreshore trail, this dual-level residence offers a tranquil lakeside lifestyle. The smart design features a self-contained one-bedroom retreat with its own kitchenette, bathroom and deck on the ground floor, and the spacious family accommodation upstairs, providing you with a multitude of options. - Dual level home on 731.3sqm block with prized north facing backyard- Sweet facade with a large veranda- Freshly presented with crisp décor, polished timber floors, ceiling fans- Air conditioned open plan lounge and dining connects to deck with an elevated outlook for entertaining- A recreation room for the kids, work station, office or second dining area- Three robed bedrooms, one with ensuite, and main bathroom on upper level- Lower level ideal for young adults, in-laws, guests or even as extra income- Supersized combined laundry and storage room- Double garage plus additional driveway parking- Great size yard for kids and pets backdropped by leafy views- 2 minutes to Woodrising IGA, central to shops and dining at Glendale and Toronto