

3 Emily Court, Croydon, Vic 3136



Sold House

Monday, 6 November 2023

3 Emily Court, Croydon, Vic 3136

Bedrooms: 4

Bathrooms: 2

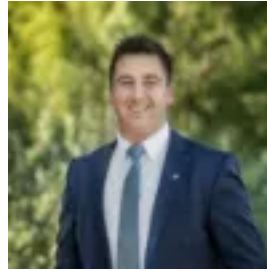
Parkings: 1

Area: 981 m2

Type: House



Ash Thompson
0398706211



Alan Hodges
0398706211

\$990,000

Presenting an enviably expansive floorplan with plenty of indoor and outdoor space, this tastefully updated home is set on an immense 981sqm block with private gated access to the adjacent oval. Enjoying a peaceful setting within a friendly family court, the single level home offers an unmissable opportunity for growing families. Positioned within walking distance of Croydon Primary School, Croydon Community School, Croydon Station and Croydon Central shopping, the home is also set moments from Croydon Oval, Main Street and Civic Square shopping, Swinburne University, McAdam Square shopping, Luther College, Yarra Valley Grammar, Good Shepherd Primary School and Melba Secondary College. Framed by leafy established gardens and a sundrenched patio entry, the home greets visitors into a spacious lounge with an inviting open fireplace. Adjacent, a generous separate open plan living and dining area offers ample zoned space for harmonious family living. At the rear, an elevated semi-undercover decking is superbly laid out for relaxed outdoor entertaining, overlooking a secure backyard with a sprawling lawn, colourful garden borders, a mature lemon tree, and direct gated access to a public oval. The airy modern kitchen includes ample storage space, a breakfast bar for casual meals, and stainless steel appliances including a dishwasher and a freestanding 900mm electric oven with five-burner gas cooktop. Secluded off the main living area, the substantial master bedroom includes two sets of double built-in wardrobes, a private ensuite bathroom, and a tranquil garden view. Three additional oversized bedrooms are each equipped with built-in wardrobes, and are complemented by a contemporary central bathroom with a stone vanity, an indulgent freestanding bathtub, a separate shower room, and a separate W/C. Featuring high ceilings, polished hardwood floors, gas ducted heating, split system air conditioning, excellent inbuilt storage, external shade blinds, roller blinds with privacy sheers, and a large laundry with direct outdoor access, the home also includes a single lock-up garage with rear workshop, plus additional off-street parking space.