

3 Everly Circuit, Pakenham, Vic 3810



House For Sale

Friday, 14 June 2024

3 Everly Circuit, Pakenham, Vic 3810

Bedrooms: 4

Bathrooms: 2

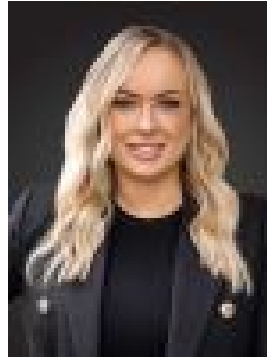
Parkings: 2

Area: 575 m2

Type: House



Tahnee Morgan
0410029953



Terri Fellows
0400573483

\$695,000 - \$764,500

Positioned within a highly sought-after, family-friendly estate, Lakeside Pakenham, this impeccably presented residence offers a prime opportunity for those seeking convenience and comfort. Meticulously maintained, with contemporary and versatile interiors, this home epitomizes effortless living with minimal upkeep. On entry you are welcomed into freshly painted walls throughout and beautiful hybrid flooring. The master suite features a walk-in robe and full ensuite with oversized shower, toilet and double vanity, whilst the additional two-bedrooms are equally spacious, equipped with built-in robes, and are conveniently situated near the main bathroom, bath, shower, vanity, and separate toilet. As you continue through the home, the secondary living zone and separate study/4th bedroom provides extra space and comfort for larger families. The light and bright open plan kitchen, living and meals area, will certainly impress the chef of the household with 900mm oven and stove top appliances, upgraded tapware, LG dishwasher, ample storage, breakfast bar and walk in pantry. Glass sliding doors adjoins out to the undercover stratco decked pergola, providing effortless indoor/outdoor entertaining whilst the kids and pets have plenty of room to play. Additional features include a garden shed, ducted heating, near-new carpets, evaporative cooling, split system cooling unit, side gate access, double remote controlled garage with external access and a sizable laundry with overhead cabinetry. Conveniently located near the Cardinia Road Train Station, M1 freeway access, renowned Primary & Secondary schools, vibrant cafes, Arena and Lakeside Shopping Centre's, the picturesque lake with enchanting walking tracks and so much more. This exquisite residence offers a lifestyle like no other. For more information, please contact Terri 0400 573 483 | Tahnee 0410 029 953 or we look forward to seeing you at our next open for inspection. Property Code: 547