

3 Girtin Circuit, Pimpama, Qld 4209



House For Sale

Friday, 24 May 2024

3 Girtin Circuit, Pimpama, Qld 4209

Bedrooms: 3

Bathrooms: 2

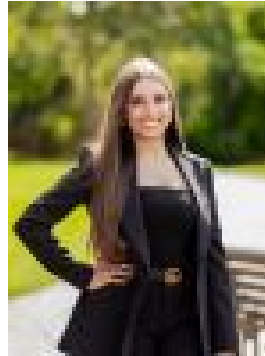
Parkings: 2

Area: 405 m2

Type: House



Jason Atkinson
0438690656



Mikayla Melhem
0415102030

Expressions of Interest

Nestled in the prestigious Pacific Cove Estate, 3 Girtin Circuit offers an unparalleled blend of modern luxury and comfortable family living. Do Not Miss The Opportunity To Call This Beautiful Home Your Own!! Step into a light-filled, tiled living area that radiates warmth and sophistication, providing the perfect backdrop for both everyday living and entertaining. The heart of the home is the sleek, modern kitchen, fully equipped with a 900mm gas cooktop, ample storage space and caeserstone benchtops throughout ensuring your culinary adventures are a delight. Featuring three generously sized bedrooms, each thoughtfully designed with ceiling fans and built-in wardrobes, this home offers abundant storage and a cosy retreat for every family member. The master suite, complete with a modern ensuite, also ensures mum and dad have their own private escape. Outside, the large fully landscaped yard is not only visually appealing but also practical, featuring side access and a secure, fully fenced perimeter. Whether you're hosting a barbecue or simply enjoying the serene surroundings, this outdoor space is sure to impress. This home is more than just a place to live- it's a lifestyle waiting to be embraced. See more of why we love this home below!

Features Include:

- Open plan modern kitchen with 900mm gas cooktop, ample storage and caeserstone benchtops
- Spacious tiled living/dining area with ducted air conditioning
- Master bedroom with ducted air conditioning, walk in wardrobe & modern private ensuite
- Two additional bedrooms with built in wardrobes, ceiling fans and ducted air conditioning
- 2 modern bathrooms
- Separate laundry
- Large undercover alfresco area, perfect for entertaining!
- Fully fenced, landscaped yard with side access
- Double lock up garage with epoxy flooring and additional storage space

Additional Features:

- Ducted air conditioning throughout
- Built in 2019
- NBN Ready
- Natural gas hot water
- Alarm system set up including 3x cameras
- 10KW Solar system installed
- Located in a vibrant, family-friendly neighbourhood in Pacific Cove Pimpama stands as a beacon of suburban excellence, offering a lifestyle that seamlessly blends convenience, tranquillity, and endless opportunities for growth. Boasting a perfect balance between urban amenities and natural beauty, Pimpama provides residents with easy access to top-notch schools, bustling shopping precincts, and a wide array of dining options. Beyond its modern conveniences, it is surrounded by picturesque parklands, offering ample opportunities for outdoor recreation and relaxation. Whether exploring the nearby beaches of the Gold Coast, enjoying a round of golf at one of the acclaimed courses, or simply unwinding in the serenity of its leafy neighbourhoods, it embodies the essence of modern living with a touch of suburban charm. With its thriving community and promising future developments, Pimpama truly stands as a place where residents can thrive and create lasting memories.

Important: Whilst every care is taken in the preparation of the information contained in this marketing, Ray White will not be held liable for the errors in typing or information. All information is considered correct at the time of printing.