

3 Grieve Crescent, Milperra, NSW 2214



Duplex/Semi-detached For Sale

Thursday, 9 May 2024

3 Grieve Crescent, Milperra, NSW 2214

Bedrooms: 5

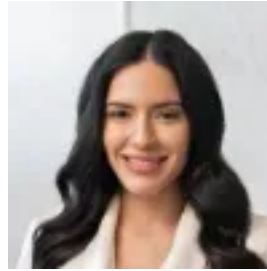
Bathrooms: 4

Parkings: 4

Type: Duplex/Semi-detached



Steven Cirillo
0287608888



Irene Vambaris
0287608888

Guide \$1,500,000

A near new haven of striking architectural design, this private double brick residence embraces a rarely found standard of contemporary luxury. It captures a sunlit north to rear aspect, close to Newland Reserve, local buses, shops, schools and the M5.- Breathtaking interiors with an array of luxury inclusions- Multiple living and dining spaces flow over three levels- Gourmet entertainers' oasis has kitchen and built-in barbecue- Private heated swimming pool with light and water features- Marble gas kitchen features a suite of integrated appliances- Five bedrooms, two offer ensuites, two luxe family bathrooms- Integrated sound system, keyless entry, CCTV, video intercom- Exotic landscaped gardens for low maintenance outdoor living- Smart home system set up, skylights and electric fireplace- Double lock-up basement garage with epoxy flooring and storage