

# 3 Hakea Close, Wyoming, NSW 2250

EMPIRE

## House For Rent

Monday, 20 May 2024

3 Hakea Close, Wyoming, NSW 2250

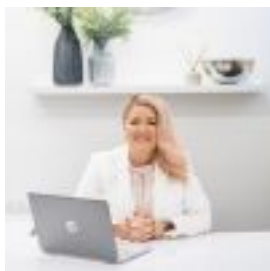
Bedrooms: 3

Bathrooms: 1

Parkings: 1

Area: 926 m2

Type: House



Tennille Mugridge  
0432424776



Georgina Crum  
0450973916

**\$690 p/w**

This well-maintained, family-friendly home offers a spacious floor plan in a quiet cul-de-sac. The master bedroom at the front includes a ceiling fan, triple mirrored wardrobes, and direct access to a three-way bathroom. The second and third bedrooms, located off the hallway, are carpeted with built-in wardrobes and ceiling fans. The kitchen features stainless steel Blanco appliances, a dishwasher, large fridge space, and a breakfast bar. The adjoining family room opens to a large covered pergola, perfect for entertaining. The lounge and dining area feature reverse cycle air conditioning, timber floors, a ceiling fan, and a natural gas connection for heating. Key features include:- Spacious lounge and dining area with reverse cycle air conditioning- Combined kitchen and family room with easy access to the large covered entertaining area- Kitchen with Blanco appliances, including a dishwasher, and a breakfast bar- Built-in wardrobes in all bedrooms, with the main bedroom offering direct bathroom access- Huge garage with an automatic door, timber floors, and ceiling fans- The laundry at the rear of the home has external access- Large, fenced, and private backyard with garden shed- Pets considered upon application- Long term lease available. For convenience the home is situated just minutes away from the local shopping centre, reputable schools, Gosford Hospital, Gosford CBD, and train station. Register your interest with our leasing team on 02 4365 2022.