

3 Hovea Place, Grays Point, NSW 2232



House For Sale

Wednesday, 10 January 2024

3 Hovea Place, Grays Point, NSW 2232

Bedrooms: 5

Bathrooms: 2

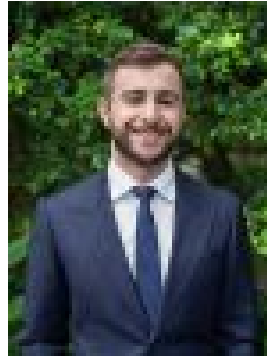
Parkings: 2

Area: 607 m2

Type: House



Dino Salvatore
0295258066



Marcus Salvatore
0433388862

For Sale

Poised on the high side of the street, this remarkable five-bedroom residence showcases a flawless architectural design of modern comfort & elegant luxury. The all-inclusive layout sprawls over three tiered levels & is fitted with earthy timber floorboards, a crisp white colour palette & numerous skylights that have been strategically positioned within the cathedral ceiling to capture the natural light. Plus, the multitude of living areas further accentuate the home's sophisticated inclusivity & includes ducted reverse cycle air-conditioning, a fully equipped kitchen & multiple indoor-outdoor entertaining areas.

- Expansive living area with inbuilt gas fireplace opening to paved entertaining alfresco with treetop vistas
- Kitchen with Smeg appliances including a 900mm Dual Fuel Cooker & combi convection microwave
- Dining room flowing off kitchen with wall-to-wall windows embracing the serene greenery that surrounds
- Master suite with modern ensuite, mirrored built-in robe & views over paved back terrace
- Four additional bedrooms, three with built-in robes & two with split-system air conditioning
- Contemporary main bathroom with separate bath & frameless shower
- Family room with large storage room & access to the fifth bedroom (potential self-contained accommodation)
- Timber entertaining terrace & a paved alfresco with immaculately landscaped gardens & crown views
- Double lockup garage with auto door, workshop & extensive under house storage
- Approximate Land Size: 607sqm

This stylish abode provides a sense of seclusion whilst being moments from local waterways, Swallow Rock Boat Ramp, Royal National Park, North West Medical Practice, Grays Point Public School & within the Kirrawee High School catchment.