

# 3 Kathleen Close, Bayswater North, Vic 3153



## Sold House

Friday, 24 May 2024

3 Kathleen Close, Bayswater North, Vic 3153

Bedrooms: 3

Bathrooms: 1

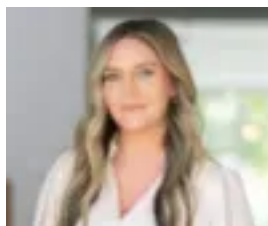
Parkings: 2

Area: 1089 m2

Type: House



Blake Danaher  
0426475551



Cara Vowles  
0423613981

**\$855,000**

Creating a terrific opportunity to craft your family's future, this comfortably presented family starter offers all the appealing attributes for immediate enjoyment, whilst its incredible 1089sqm approx. bowl-of-court allotment entices options to extend or possibly subdivide in the future (STCA).Affording a warm and relaxing atmosphere, the home's family-friendly layout entices you through to the lounge room where an abundance of natural light reflects beautifully off the richly coloured floorboards, while the dining room is perfect for celebratory dinners.Perfect for preparing and enjoying family feasts, the kitchen is well-equipped and offers the convenience of a breakfast bench, opening onto an adjoining meals zone.Quality family accommodation comprises of three generously sized bedrooms; all enjoying the benefits of built-in-robies and serviced by a family bathroom, separate toilet and full-sized laundry. The large backyard affords the ideal space for children and pets to play, while brilliant enhancements, such as; evaporative cooling and a double garage provide comfort and convenience.Enviably situated within the Tinternvale Primary and Bayswater Secondary Zones, close to Tintern Grammar, Tarralla Creek Trail, Gracedale Park, Heathmont Golf Park, buses, trains, Heathmont and Bayswater shops, Eastland Shopping Centre and Eastlink.