

# 3 Kuhler Court, Carindale, Qld 4152

## Sold House

Thursday, 10 August 2023



3 Kuhler Court, Carindale, Qld 4152

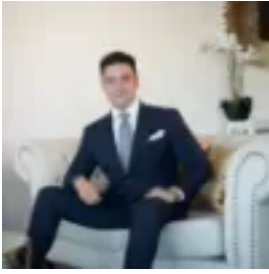
**Bedrooms: 5**

**Bathrooms: 3**

**Parkings: 3**

**Area: 1060 m2**

**Type: House**



Alex Ryan

0738432938

## Contact agent

Hidden in a peaceful cul-de-sac, this magnificent family residence on an expansive 1,060sqm allotment presents a sprawling sanctuary of grand proportions and low-maintenance liveability. Wonderfully spacious, private, and set back from the road, this sensational offering showcases an intuitive design with multiple living spaces, an alfresco hideaway, five bedrooms, three bathrooms and a study. Unveiling soaring ceilings, the lower level exudes a remarkable sense of openness and natural light. The formal lounge and dining rooms present a retreat for indoor entertaining, while the informal living and meals zone offers a relaxing setting for family time. A central kitchen connects these spaces and reveals beautiful stone benchtops, ample storage, a gas cooktop and a Smeg dishwasher to make meal preparation easy. A superb alfresco area provides spectacular living and entertaining outdoors. The undercover patio is perfect for BBQs, dinners and drinks with friends, kids and pets can play safely in the massive backyard, and you can unwind after a long day in the tranquil in-ground spa. Four light-filled bedrooms and two bathrooms reside upstairs, while a fifth bedroom, study and third bathroom feature below, offering separation and room for grandparents or guests. The master suite is designed for parents and features a relaxing layout with air-conditioning, a walk-in robe and an ensuite. Additional features:- Remote double garage and a 6x3m carport- Ample internal storage and a 4x3m garden shed- Air-conditioning in the formal lounge and master suite- LED downlights and security screens Presenting a family-friendly lifestyle in a beautiful setting, this home is just 2km from Carina State School and a moment's walk from Carindale Recreation Reserve and Minnippi Parklands. Just 3 minutes from Westfield Carindale, 5 minutes to the local cafes and Belmont Private Hospital, 10 minutes to Pacific Golf Club and 20 minutes to the Airport and CBD – this fantastic lifestyle and remarkable home await. Disclaimer: Whilst every care is taken in the preparation of the information contained in this marketing, Torres Property will not be held liable for any errors in typing or information. All interested parties should rely upon their own enquiries in order to determine whether or not this information is in fact accurate.