

# 3 Maiden Place, Newnham, Tas 7248

## Sold House

Sunday, 5 November 2023

3 Maiden Place, Newnham, Tas 7248

Bedrooms: 5

Bathrooms: 2

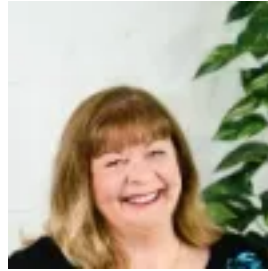
Parkings: 8

Area: 2531 m2

Type: House



Neil Hawkins  
0363379700



Yvonne Hawkins  
0363379700

## Contact agent

Drive through a tree-lined right of way to approach this delightful, gated home, it is the epitome of sheer design and architectural finesse. A magnificent property that leaves nothing left to be desired. Set on a site of 2531 sqm (approx.) this elite residence was designed with an emphasis on a spacious indoor/outdoor living arrangement. Perfectly presented with distinctive features including reverse cycle heating and heated floors throughout the home and a ducted vacuum system, 4/5 double bedrooms with wardrobes, or a media/study room. The king-size main bedroom offers a large walk-through wardrobe plus an en-suite. Be creative in the spacious kitchen, highlighting gas cooking with an island bench and plenty of work space with downlights above, overlooking an open plan dining area and a living room, there is space for all the family. Step outside through the bi-fold patio doors which open out onto a vast entertainment area for indoor/outdoor living and enjoy the garden around you. A huge shed with power for the handyman to store boats, caravans, and other essential toys! A large double lock-up garage with internal access and plenty of storage. Located in Newnham, with just a short drive to the Launceston CBD, Utas, hospitals and Maritime College this elite home will most certainly set a benchmark for the area. Land size 2531m<sup>2</sup> approx. House size 282m<sup>2</sup> approx. including garage Rates \$2,258.00 approx p.a. Water \$1,600 approx p.a. Built 2009\*\*Harcourts Launceston has no reason to doubt the accuracy of the information in this document which has been sourced from means which are considered reliable, however we cannot guarantee accuracy. Prospective purchasers are advised to carry out their own investigations. All measurements are approximate\*\*