

3 Marcus Court, Hoppers Crossing, Vic 3029



House For Sale

Thursday, 30 May 2024

3 Marcus Court, Hoppers Crossing, Vic 3029

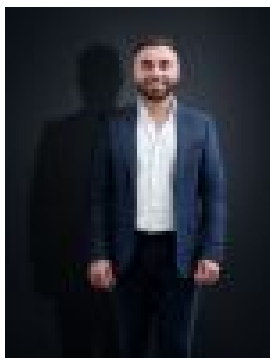
Bedrooms: 6

Bathrooms: 3

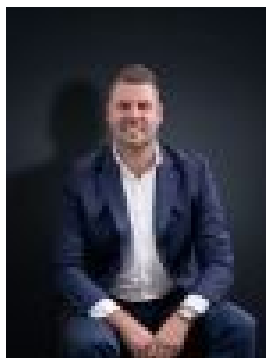
Parkings: 10

Area: 1007 m2

Type: House



Abdul Merabi
0424263506



Mitch Smit
0397417777

\$880,000 - \$930,000

Welcome to your future home—a stunning 6-bedroom, 3-bathroom residence that's all about luxury, space, and comfort! Nestled in the heart of the highly sought-after Cambridge Estate, this gorgeous property sits on a massive 1007sqm (approx) lot and is ready to make your family's dreams come true. The moment you arrive, you'll feel the wow factor. This home exudes luxury from every corner, with expansive living spaces filled with natural light. Step inside and be amazed by the beautiful floorboards that run throughout the open living areas. You'll love the custom modern kitchen, designed for those who adore cooking and entertaining. It features ultra-spacious soft-close cabinetry, top-of-the-line appliances, and ample storage, making meal preparation a joy. The open-plan dining area is perfect for hosting family dinners and gatherings with friends. This home's thoughtful floor plan includes five generously sized bedrooms, plus a study that can easily be converted into a sixth bedroom. Two luxurious master bedrooms feature their own ensuite bathrooms—one with a spacious walk-in robe, and the other with a built-in robe. The remaining bedrooms are well-sized and share a central bathroom with a bath, along with a spacious laundry offering plenty of storage. Imagine your family enjoying multiple living spaces that cater to all your needs, whether it's family time, work, or play. The open-plan living area flows seamlessly to an outdoor pergola, perfect for indoor-outdoor living. The expansive backyard is an entertainer's paradise with a swimming pool and plenty of space for barbecues and fun. Plus, the low-maintenance front yard means more time to enjoy your new home. With drive-through access, convenience is key. Tucked away in a quiet court, this home offers peace and privacy, making it an ideal family sanctuary. Premium features include downlights throughout, ducted heating and cooling for year-round comfort, and a massive play area for kids. The location couldn't be better! Your new home is within walking distance of top schools like Cambridge Primary School and Heathdale Christian College. Pacific Werribee Shopping Centre is just a short stroll away, and local playgrounds, sporting grounds, the Princess Freeway, and Aqua Pulse provide endless opportunities for outdoor fun.