

3 Mercy Glade, Schofields, NSW 2762

Sold Townhouse

Saturday, 28 October 2023

3 Mercy Glade, Schofields, NSW 2762

Bedrooms: 4

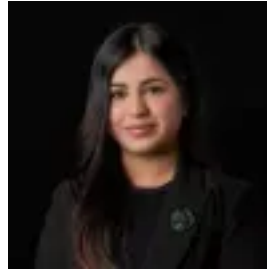
Bathrooms: 2

Parkings: 1

Type: Townhouse



Amit Kumar
0288964336



Siya Sachdeva
0288964336

\$932,000

With a location that says it all, this home is located in very short proximity to local parks, Tallawong Metro Station, Schofields Train Station, and local shopping centers as well as located within the Riverbank Public School and The Ponds High School catchment. It boasts contemporary finishes that flow throughout as well as comfort, convenience and space for growing families. Beyond the walls of this exceptional property, you will find yourself in a vibrant neighbourhood, surrounded by essential amenities, premium schools, parks and more. The versatile layout of the property offers a formal lounge as you step into the home and a combined living-dining area. Natural light flows seamlessly through the home and out to its low-maintenance leveled backyard complete with decking and beautiful landscaping, perfect for relaxing and enjoying time with your loved ones. The modern kitchen features quality stainless steel appliances, tiled splash backs, stylish lights, stone bench tops, a gas cooktop, an eat-in breakfast bar as well as plenty of storage space. Accommodation consists of four bedrooms, all with built in robes. The master bedroom features its own private ensuite. Both bathrooms have been completed with floor-to-ceiling tiles, and high-quality fittings and finishings. Features you will love:- LED lights throughout the home- Upgraded light fittings - Ducted air conditioning- Floorboards throughout- Well-appointed kitchen - Floor-to-ceiling tiles in bathrooms- Single lock-up garage with internal access- Wonderful community and low Strata Location highlights:- 5 minutes drive to Schofields Train Station and Tallawong Metro Station- 5 Minutes drive to Schofields Shopping Village- 10 minutes drive to Rouse Hill Town Centre- Short walk to The Ponds High School and Riverbank public School- Short walk to Beacon Park- Within short distance to Childcare Centres and Medical Centres Disclaimer: All information contained herein is obtained from property owners or third-party sources which we believe are reliable. We have no reason to doubt its accuracy, however, we cannot guarantee it. All interested person/s should rely on their own enquiries.