

3 Namatjira Street, Barden Ridge, NSW 2234

Sold Residential Land

Tuesday, 26 September 2023



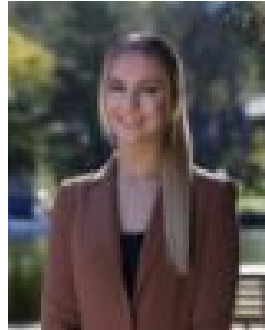
3 Namatjira Street, Barden Ridge, NSW 2234

Area: 627 m2

Type: Residential Land



Andrew Wilson



Tara Davis

0414653903

\$1,100,000

This unique opportunity to build the home you've always dreamed of could be made a reality with this 627 square metre, flat block in the gorgeous new 'Ridgeway Estate'. Offering a large pocket of land on levelled ground and stunning city views. Positioned all within easy reach of sporting fields and the Ridge Golf Course and Driving Range, as well as quality schooling and transportation. - 627 square metres - Flat and level block- City and valley views- Positioned just a short walk from Sutherland Shire Christian School and Lucas Heights Community School- A stones throw from The Ridge Sporting fields- Situated in the well sought after suburb of Barden Ridge. When looking at properties it's important to have confidence in how much you can borrow. As Ray White are partnered with Loan Market they can make this simple and easy for you. Should you wish to know your borrowing powers simply go to www.loanmarket.com.au/brokers/jason-wylie now and our Loan Market broker will be in touch.