

3 Ninth Avenue, Railway Estate, Qld 4810



House For Sale

Wednesday, 24 April 2024

3 Ninth Avenue, Railway Estate, Qld 4810

Bedrooms: 3

Bathrooms: 2

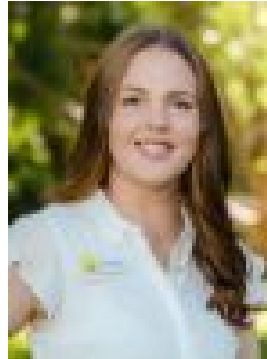
Parkings: 2

Area: 809 m2

Type: House



Giovanni Spinella
0406664191



Jaimee Rankin
0498656483

Auction

Welcome to 3 Ninth Avenue, Railway Estate, a beautifully renovated Queenslander that offers a modern and vibrant living experience. This property has undergone extensive renovations, leaving no stone unturned. From the fresh and modern fittings and fixtures to the freshly turfed yard, every detail has been taken care of. As you enter the property through the front patio, you'll be greeted by the open plan living area, featuring a bright blue feature wall that adds a pop of color and sets a lively atmosphere. The space seamlessly flows into the white and bright kitchen, which boasts ample cupboard space, stone bench tops, a double sink, a breakfast bar, and modern appliances including a brand new range hood, stovetop, and oven. The main bedroom of the house is a true retreat. It offers a spacious layout and connects to a well-appointed walk-through wardrobe that leads to a luxurious ensuite bathroom, adorned with blue feature tiles and high-end finishes, creating a serene and stylish ambiance. The other two bedrooms in the house are generously sized and offer versatile options. One of the bedrooms features a built-in wardrobe, while the other has a dressing room that can be used as a study or toy room, providing ample storage space and flexibility to suit your needs. These bedrooms are perfect for accommodating family members, guests, or setting up a home office. The yard of this property is a blank canvas, ready for you to create your own oasis. Whether you envision a shed, a pool, or a beautiful garden, the possibilities are endless. Situated on an 809sqm block in the sought-after Railway Estate, this property offers a prime and highly desirable location. Railway Estate is known for its vibrant community and its close proximity to amenities and schools, such as Townsville Grammar School and St Mary Margarets, making it ideal for families. With stunning views of Castle Hill, convenient access to the stadium, CBD, Palmer Street, and being just 10 minutes away from the Strand, this property provides an excellent blend of comfort, convenience, and charm. Don't miss the opportunity to make this property your own and enjoy the fantastic lifestyle it has to offer in the prime and sought-after Railway Estate. *Property Description/Write-Up is Copyright of Team Giovanni at Ray White Townsville. Disclaimer: Ray White Townsville has prepared this information using every endeavour to ensure that the information given is true and accurate but accepts no responsibility or liability in respect of any errors, omissions, or inaccuracies that may occur. All prospective purchasers should endeavour to make their own enquiries to verify the accuracy of the information provided.