

3 Tabetha Court, Angle Vale, SA 5117



Sold House

Tuesday, 23 January 2024

3 Tabetha Court, Angle Vale, SA 5117

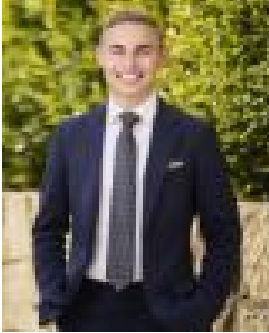
Bedrooms: 4

Bathrooms: 2

Parkings: 6

Area: 1787 m2

Type: House



Bailey Truscott
0452267602

\$850,000

Nestled in the quiet embrace of a cul-de-sac, this exceptional family home offers an idyllic blend of comfort and style. A welcoming facade introduces a sense of peace, with a double carport featuring an automatic roller door and convenient drive-through access to the rear shed, catering to the needs of a growing family. The lush, established gardens surrounding the property enhance its overall charm, creating a serene and private oasis. The master suite, positioned to the left of the entry, serves as a peaceful retreat with a walk-in robe, bay window, and a split system for personalized comfort. The ensuite boasts a shower recess, single vanity, and toilet for added convenience. To the right of the entry, an elegant formal lounge with a vaulted ceiling sets the tone for sophistication, while opposite, a formal dining area with its own vaulted ceiling provides a perfect backdrop for family gatherings. The heart of the home lies in the modern kitchen, meals, and living area. Recently renovated, the kitchen features contemporary amenities, including an electric cooktop and oven (Belling), double sink, convection microwave, and a built-in dishwasher. A combustion fireplace in the living area adds warmth and character, complemented by double French doors that open to a picturesque view of the outdoors. Additional features include ducted evaporative cooling and ducted reverse cycle heating and cooling, ensuring year-round comfort. The property offers multiple bedrooms, with each space thoughtfully designed for family functionality. The three-way bathroom includes a linen cupboard, separate toilet, shower recess, and bath. Outdoors, an expansive 1,787sqm land, free of easements, provides ample space for recreation and relaxation. The property, built in 2000, has been meticulously maintained to accommodate the needs of a modern family. An outdoor entertainment area with a pergola invites family gatherings, while a tranquil fish pond adds a touch of serenity. Enjoy the summer months in the salt-chlorinated swimming pool, creating lasting memories for your family. This residence encapsulates the perfect family lifestyle, combining practical features with an elegant design. With a land size that allows room for growth and play, and no easements to restrict your vision, 3 Tabetha Court stands ready to become your family's cherished haven. Don't miss the opportunity to make this house your home. Additionally: Year Built - 2000 Land Size - 1787sqm (approx.) Easements - No Local Council - City of Playford Council Zone - Master Planned Township \ Emerging Township Activity Centre With so much on offer, this is definitely not one to overlook - call Bailey Truscott on 0452 267 602 to register your interest today! Want to find out where your property sits within the market? Have one of our multi-award-winning agents come out and provide you with a market update on your home or investment! Disclaimer: Every care has been taken to verify the correctness of all details used in this advertisement. However, no warranty or representative is given or made as to the correctness of information supplied and neither the owners nor their agent can accept responsibility for error or omissions. Ray White Gawler East RLA 327 615