

**3 Yeerung Way, Whittlesea, Vic 3757**

CHWYLA

**House For Sale**

Saturday, 2 December 2023

3 Yeerung Way, Whittlesea, Vic 3757

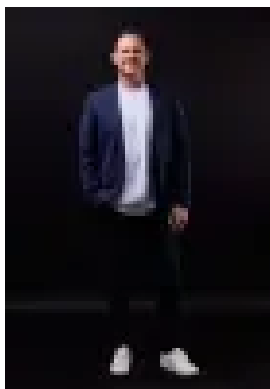
**Bedrooms: 5**

**Bathrooms: 2**

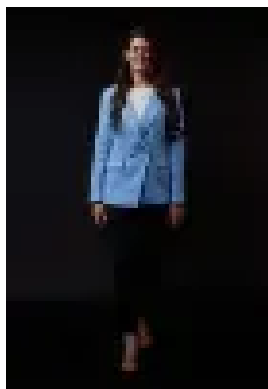
**Parkings: 3**

**Area: 800 m2**

**Type: House**



Paul Chwyla  
0386009995



Stacy Richards  
0386009995

**\$950,000 - \$990,000**

Expressions of interest closing Wednesday 20th December at 7pm (Unless Sold Prior) Make more of : 800m<sup>2</sup> block Custom build Approx. 40 squares Five bedrooms Two bathrooms with stone benchtops Two living areas Triple garage with insulated garage doors Drive through access onto exposed aggregate 9.5x3.5m solar heated pool 16 solar panels totalling 5kW of power Security system with 16 cameras surrounding home Alarm 9ft ceilings Square set cornices Downlights Spotted Gum floorboards Double blinds Oversized internal doors Stone kitchen benchtops with double waterfall 900mm La Germania appliances Dishwasher Plumbed fridge space Butler's Pantry with stone benchtops Soft close cabinetry throughout Floor to ceiling tiling in bathrooms Rainwater showerheads throughout Freestanding tub Laundry with stone benchtop, significant built-in cabinetry Walk-in robes in multiple bedrooms Gas log fireplace Zoned ducted heating Refrigerated cooling Ducted vac Covered alfresco with gas and water connections Glass panel pool fencing Sandstone pavers in pool area Fire pit area with fire pit Shed with power Low maintenance landscaping Two water tanks Colourbond fencing Exposed aggregate to driveway and sides of home 700m to Oakbank Boulevard Playground 1.9km to Whittlesea Bowls Club 2.1km to Whittlesea shops The initial appeal – A fully featured, family focused five bedder. This is a custom build with high end features. We're talking 9ft ceilings, square set cornices, stone benchtops everywhere, Spotted Gum floorboards, refridge cooling and a gas log fireplace across approx. 40 squares of home. The main attraction – We can't pick just one, so here are our faves. 1. The 9.5x3.5m pool with sandstone pavers, glass panel pool fencing and a fire pit 2. The triple garage with drive through roller door [...also Day Spa vibes in the ensuite, 16 cameras surrounding the home, 16 solar panels on the roof and a shed out the back] Your journey here starts this Saturday.