

30/135 Easty Street, Phillip, ACT 2606

ARCHER

Sold Townhouse

Monday, 14 August 2023

30/135 Easty Street, Phillip, ACT 2606

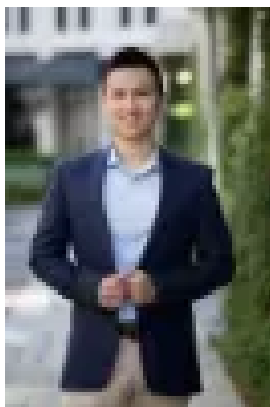
Bedrooms: 2

Bathrooms: 2

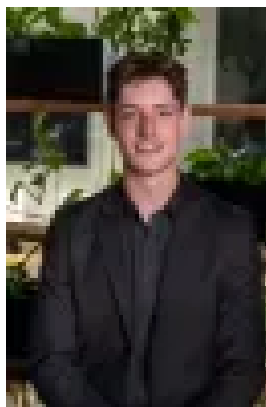
Parkings: 2

Area: 169 m2

Type: Townhouse



Alex Wang
0262625232



Benjamin Bailey
0262625232

Contact agent

Experience the best of urban living with this exceptional modern townhouse situated in the dynamic center of Woden. Perfectly positioned within walking distance of Westfield Woden, Canberra Hospital, CIT School, excellent public transportation options, and the bustling Woden Town Centre with its diverse range of shops, restaurants, and vibrant nightlife. This stunning townhouse offers unparalleled quality and convenience, providing you with easy access to everything you need. As you step inside, you'll be greeted by the ground-level double garage, providing secure parking with the added convenience of internal access. Ample additional space is available for storage, ensuring you have plenty of room for your belongings. Moving upstairs, a light-filled open plan living area awaits, seamlessly flowing out to a low-maintenance courtyard, perfect for outdoor entertainment and relaxation. Adjacent to the open plan dining area, you'll discover a modern and stylish open-plan kitchen equipped with high-quality appliances, generous storage options, and a spacious pantry. This level also features a convenient powder/laundry room, adding to the overall ease of living. Ascending to the upper level, you'll find two generously sized bedrooms drenched in natural sunlight. The master room boasts its own ensuite, while the second bedroom is serviced by the main bathroom. Both bedrooms come complete with built-in wardrobes, ensuring ample storage space for your personal items. This rare opportunity is ideal for first home buyers, young families, and savvy investors alike. Currently on a \$600/week monthly lease, this townhouse presents an attractive investment opportunity as well as for the next owner who wants to move in soon. Contact us today for more information and secure your appointment to view this remarkable property. Don't miss out!

Features:

- Living 100 m² + Courtyard 22 m² + Garage 47 m²
- Easy-to-maintain courtyard
- Stone Banchtop
- AEG Appliance
- R/C aircondition
- Full height tiles in Bathrooms
- Powder room
- Double Garage with internal access and Automatic Roller-door
- Convenient location close to Woden Town Center, Westfield Woden, Canberra Hospital, CIT School and public transportation

Particulars (all approx.)

Built year: 2018
Current Rent: \$600/week, monthly agreement
Strata: \$970/quarter
Rates: \$515/quarter
Landtax (Only when leased): \$635/quarter
EER: 4.5

DISCLAIMER We have obtained all information provided here from sources we believe to be reliable; however, we cannot guarantee its accuracy. Prospective purchasers are advised to carry out their own investigations and satisfy themselves of all aspects of such information including without limitation, any income, rentals, dimensions, areas, zoning and permits. Any figures and information contained in this advertisement are approximate and a guide only and should not be relied upon for financial purposes or taken as advice of any nature. Individuals, Self-Managed Super Funds, companies, anyone or entity, should make their own inquiries and seek their own advice and rely only upon those inquiries and advice. Archer does not guarantee the accuracy of the information above and are not financial advisers or accountants and do not provide any of the above information as advice of any nature.