

30/153 Burswood Road, Burswood, WA 6100



Apartment For Sale

Friday, 17 May 2024

30/153 Burswood Road, Burswood, WA 6100

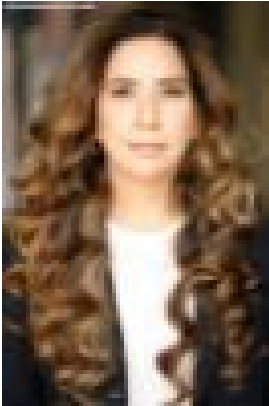
Bedrooms: 2

Bathrooms: 2

Parkings: 2

Area: 130 m2

Type: Apartment



Sweeda A Kazemi

0481117004

\$790,000

Argyle on Burswood stands out in the Perth property market, offering unparalleled features that set it apart. Combining exquisite design with sophisticated elegance, the expansive interiors of Argyle on Burswood are meticulously crafted to the highest standards, utilizing premium materials, fixtures, and finishes. Situated just 3km from the Perth CBD, this magnificent 7-storey development offers a connected lifestyle, enveloped by a vibrant array of cafes, restaurants, riverside walkways, entertainment venues, public transportation options, and much more. Within each apartment, discover a modern kitchen design adorned with Caesarstone or comparable countertops, complemented by a vibrant glass splash back, opulent timber cabinetry, and premium European appliances. The commitment to excellence extends seamlessly to the bathroom, boasting expansive mirrors, pristine white basins, and a marble-effect stone top floating vanity, softly illuminated by recessed LED lighting.

Highlighted Features:

Elevated Excellence: *Seamless keyless smart entry security system *Indulgent ducted air conditioning for ultimate comfort *Exquisite European-designed appliances of the highest quality *Stylish frameless balustrade for a sophisticated touch *Reduced stamp duty for added value *State-of-the-art video security intercom for peace of mind *Luxurious timber flooring for timeless appeal

Exclusivity in Abundance: *All-season rooftop terrace boasting an indoor/outdoor cinema experience *Serene proximity to GO Edwards Park, a natural oasis at your doorstep *Fine dining awaits at the on-site restaurant and bar *Convenient electric charging station in the car park *Thoughtful water recess connection for refrigerator convenience *Twenty-six meticulously crafted apartment designs to suit every taste *City lights within reach without compromising tranquility *Access to a well-appointed gym and health club for residents' well-being *Ample and secure premium car stackers for added convenience

Unmatched Luxury: *Experience the ease and convenience of our complimentary concierge services. *Eliminate strata company management fees for true peace of mind *Harness solar energy savings for sustainable living *Seamlessly stay connected with high-speed internet access *Effortless vertical transport with three dedicated lifts for residents

Explore the Off the Plan duty concession and rebate scheme to maximize your investment in WA's flourishing residential apartment market. Contact us now to discover the benefits of this strategic opportunity. Join us for an unforgettable viewing experience and envision the life of luxury and comfort that awaits within these walls. For further inquiries or to secure your viewing appointment, please contact us at 0481 117 004. Don't miss this rare opportunity to make this exceptional property your own!