

**30/5 Burbury Close, Barton, ACT 2600**



**Sold Apartment**

Friday, 1 September 2023

30/5 Burbury Close, Barton, ACT 2600

**Bedrooms: 1**

**Bathrooms: 1**

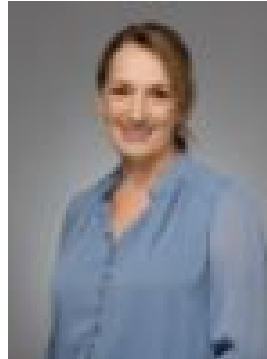
**Parkings: 1**

**Area: 72 m2**

**Type: Apartment**



Matt Sebbens  
0261473396



Naomi Sachs  
0261473396

## Contact agent

Experience upscale living at its finest in the heart of Canberra's coveted inner south, within Burbury Close at Realm Park. This sophisticated apartment offers an abundance of space and natural light, along with captivating panoramic views. Situated in close proximity to the Parliamentary Triangle, the scenic Lake Burley Griffin, and the charm of Kingston and Manuka shopping centres, this residence effortlessly combines convenience with allure. Boasting an intelligent design, the apartment's interior is bathed in natural light and features an open-concept layout. The modern kitchen showcases luxurious stone benchtops, stylish Marble & timber accents, and high-quality Miele appliances. The master bedroom boasts a full wall of built-in robes for ample storage. The exquisite bathroom is adorned with top-tier tiling and elegant marble vanities, accompanied by mirrored cabinets. Discover a harmonious blend of luxury and practicality, with a private balcony offering a tranquil retreat. This exclusive living experience is complemented by easy access to the vibrant city pulse and a Euro-style compact laundry for added convenience. Features Floor-to-ceiling glass sliding doors Spacious main bedroom with extensive storage Study area, ideal as a home office Open-plan kitchen with electric cooking Ducted heating and cooling 15m<sup>2</sup> balcony European laundry Communal garden Car space with storage cage 100 metres walk to coffee at Maple + Clove 250 metres walk to public transport 1km walk to Manuka Shopping Precinct 1km walk to Bowen Park & Lake Burley Griffin Living size: 72m<sup>2</sup> Balcony size: 15m<sup>2</sup> Body corporate: \$805.60ppq Sinking fund: \$229.90ppq Special levy: \$412.40ppq