

30 Bristol Street, Mitchell, Qld 4465

Raine&Horne.

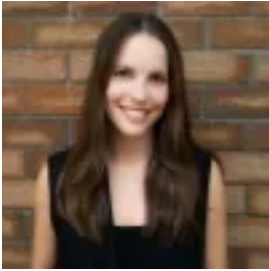
Residential Land For Sale

Tuesday, 28 May 2024

30 Bristol Street, Mitchell, Qld 4465

Area: 4 m2

Type: Residential Land



Sarah Tully

0746222622

Offers Over \$130,000

Welcome to 30 Bristol Street, Mitchell. An entire 4.05 ha (approx. 10 acres) of stunning residential land offering endless possibilities for the right buyer. Experience the tranquility and beauty of country living only 4 minutes from Mitchell's town center and around the corner from the picturesque Neil Turner Weir. This block of land presents as the perfect blank canvas for your next venture, whether that means building your dream home on acreage, acquiring a livestock paddock close to town or land for recreational activities. The fully fenced block is separated equally on two titles ready to be divided and sold off, or keep and utilize the entire 10 acres*. Don't miss out on this rare opportunity to secure a piece of paradise in Mitchell. If this is something you are seeking for your lifestyle call Sarah Tully on 0427 223 858 to schedule a private viewing.