

**30 Caversham Drive, Pakenham, VIC, 3810**



**Sold House**

Thursday, 27 April 2023

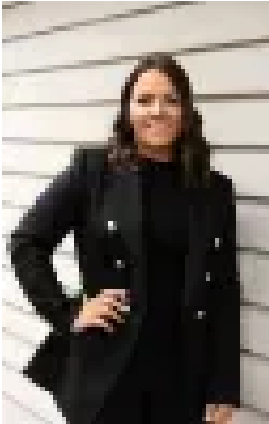
30 Caversham Drive, Pakenham, VIC, 3810

**Bedrooms: 4**

**Bathrooms: 2**

**Parkings: 2**

**Type: House**



Tahnee Morgan  
0400573483



Terri Fellows  
0410029953

## **Nothing left to do but move in!**

This home delivers a modern functional floorplan that the whole family can enjoy, it offers an abundance of natural light and is suitable for buyers looking for their first home, investment or to downsize.

As you arrive to this property, you will note the gardens and garden beds have been well manicured and maintained.

Upon entry you are welcomed to the separate study zone. Down the hall leads you through to the master bedroom with sleek ensuite and large fitted walk-in wardrobe. Two bedrooms have built in robes, and are located around the shared bathroom and separate toilet. The home itself has been freshly painted and offers brand new carpets throughout.

This kitchen will allow you to entertain in style, complete with a stone benchtop & stainless-steel appliances including a dishwasher, 900mm oven & cooktop, built in-pantry as well as ample bench space & cupboard storage with a flowing integrated meals zone, creating the ultimate open plan living space for all.

The additional features include: ducted heating, split system cooling, a double remote-control garage with internal and external access, side gate access, downlights, separate laundry, a covered alfresco and low maintenance gardens which completes this fantastic package, positioned on approx. 336m<sup>2</sup> allotment.

Perfectly situated in the highly sought-after Caversham Waters Estate, where you will find you are within walking distance to the Village Shopping Centre, local cafes, medical centres, public transport, M1 freeway, parklands, walking tracks, John Henry Primary School & Edenbrook Secondary college, Lakeside Primary, Pakenham Springs and Lakeside College, Lakeside Square shopping precinct, public transport and Cardinia Train Station.

You don't want to miss out on this opportunity, so call Terri 0400 573 483 or Tahnee 0410 029 953 today for more information, otherwise we look forward to seeing you at our next open for inspection.

Property Code: 143