

30 Doynton Parade, Mount Waverley, Vic 3149



Sold House

Thursday, 22 February 2024

30 Doynton Parade, Mount Waverley, Vic 3149

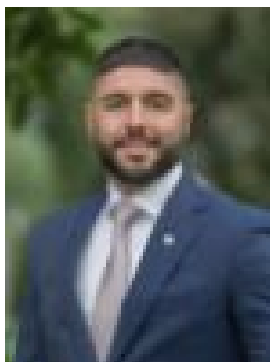
Bedrooms: 4

Bathrooms: 2

Parkings: 2

Area: 726 m2

Type: House



Costa Calaitzis
0400110489



Stephen Huang
0499088880

\$1,785,500

Delivering a highly sought-after opportunity to acquire an expansive 726 sqm (approx) allotment and a home with significant promise. This charming 4 bedroom, 1 bathroom blonde brick beauty provides move-in ready comfort or leasing out potential while offering the perfect future foundation for a comprehensive renovation, brand new home or multi-townhouse development (STCA). Presented in original condition yet well-maintained throughout, immaculate spaces reveal a lounge, kitchen/meals area, study, split system heating/AC and single garage. Positioned directly opposite Syndal South Primary in the GWSC catchment, a stroll to Syndal station and shops, Glendal Primary and close to Valley reserve, Scotchman's Creek, Huntingtower, Wesley College, Kingsway, The Glen and M1 Freeway.