

30 Emica Parade, Knoxfield, Vic 3180



House For Sale

Friday, 24 May 2024

30 Emica Parade, Knoxfield, Vic 3180

Bedrooms: 4

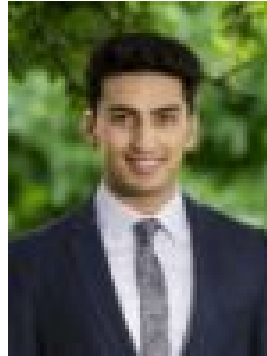
Bathrooms: 3

Parkings: 2

Type: House



Vivian Li
0398002222



Amir Hashemi
0412008721

AUCTION

THE PROPERTY Perfectly positioned and luxuriously appointed, this stunning four-bedroom retreat is impressive from every angle. Located in a tranquil cul-de-sac, this sparkling home extends across two light-filled levels, with the huge open plan living zone enjoying uninterrupted parkside views across the serene greens of the Waterford Valley Golf Course. Connoisseurs will appreciate the sleek, contemporary kitchen featuring a waterfall bench and breakfast bar, elegant Calcutta stone surfaces, a premium Smeg cooktop/oven, Fischer and Paykel integrated dishwasher, fridge, and freezer, a Siemens coffee machine, and a built-in oven. While the waterside alfresco deck is an entertainer's dream, a private oasis to relax with family and friends. Journeying upstairs discover a spacious retreat, study nook and the lavish main bedroom boasting walk-in robe and fully tiled ensuite, with two further robed bedrooms (one with WIR) sharing the sparkling family bathroom. Additional inclusions of a guest bedroom privately positioned on the ground floor complete with walk-in robe and ensuite, courtyard, ducted heating, split systems, oak timber flooring throughout, solar hot water, laundry with matching stone surfaces and double remote garage with internal access further enhance the appeal of this sophisticated sanctuary.

THE FEATURES Stunning four-bedroom, three-bathroom luxury home
Huge open plan living and alfresco overlooking golf course
Additional retreat upstairs
Main bedroom features walk-in robe & fully tiled ensuite
Two further first-floor robed bedrooms share family bathroom
Ground floor guest main bedroom with WIR & luxe ensuite
Large Kitchen, including Integrated Fisher & Paykel Dishwasher, Fridge/Freezer as well as Siemens built in coffee machine and additional oven.
Ducted heating and split system cooling throughout
Double remote garage with convenient internal access

THE LOCATION Ideally located in a tranquil estate alongside the Waterford Valley Golf Course, with an array of parkland and walking trails close by, Karoo Primary just a short stroll away, Mountain Gate Shopping Centre and Westfield Knox mere minutes away, plus Eastlink and the Monash Freeway both within easy reach.

AUCTION - Saturday 6th of July at 11am